

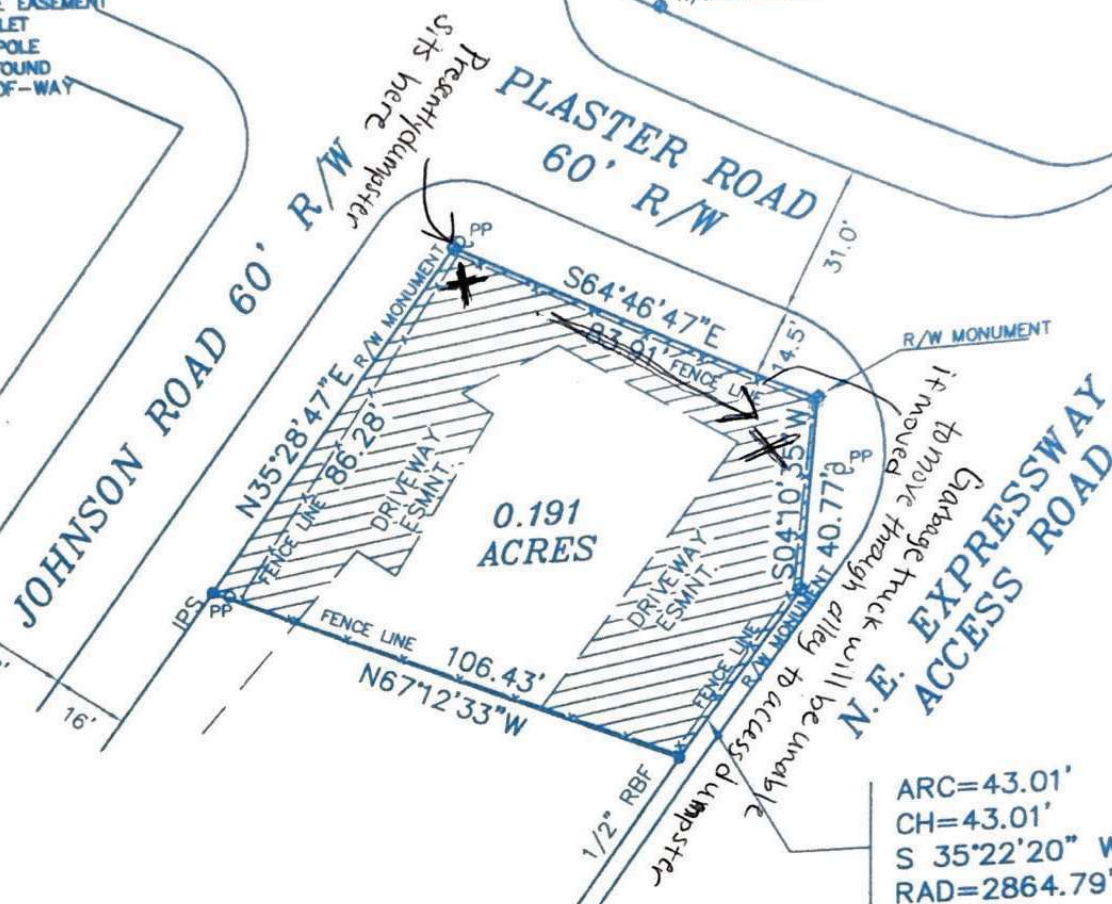


LEGEND

IPF	IRON PIN FOUND (1/2" REBAR)
IPS	IRON PIN SET (1/2" REBAR)
OTF	OPEN TOP FOUND
CTF	CRIMP TOP FOUND
●	JUNCTION BOX
LL	LAND LOT LINE
○	LIGHT POLE
⊙	MANHOLE
—	PROPERTY LINE
—	BUILDING LINE
—	CHAIN LINK
—	CENTERLINE
—	DRAINAGE EASEMENT
—	DROP INLET
PP	POWER POLE
RBF	REBAR FOUND
R/W	RIGHT-OF-WAY

THIS SURVEY HAS BEEN CALCULATED FOR
CLOSURE BY LATITUDES AND DEPARTURES AND
FOUND ACCURATE TO WITHIN ONE FOOT
IN 166,548 FEET.

NOTE:
FENCES SHOULD NOT BE PLACED
USING SIDE DIMENSIONS FROM
HOUSE OR STRUCTURE.



SURVEY FOR
HAMZA Y. ABDI
LAND LOT 245 18th DIST.
DEKALB COUNTY, GEORGIA
SCALE: 1" = 40' JANUARY 2, 2001
REC. IN DEED BOOK 10246, PG. 752 & 753



IN MY OPINION, THIS PLAT IS A CORRECT
REPRESENTATION OF THE LAND PLATTED AND
HAS BEEN PREPARED IN CONFORMITY WITH
THE MINIMUM STANDARDS AND REQUIREMENTS
OF LAW. *E. Eugene Kay*



SURVEY CONCEPTS, INC.
PROFESSIONAL LAND SURVEYORS & ENGINEERS

3675 HEWATT COURT - SUITE B - SNELLVILLE, GEORGIA 30039
(770) 736-7666 SURVEYCONCEPTS@EARTHLINK.NET FAX (770) 736-4623

Wood Material

Height 72"

Depth 60"

84" wide

