

3063 Clairmont Rd - Zoning Map



1/27/2025, 4:22:09 PM

City Limits

Address

Tax Parcel Zoning

Mixed Use - Business Center

Neighborhood Residential 1

DeKalb County Tax Parcels

1:2,257

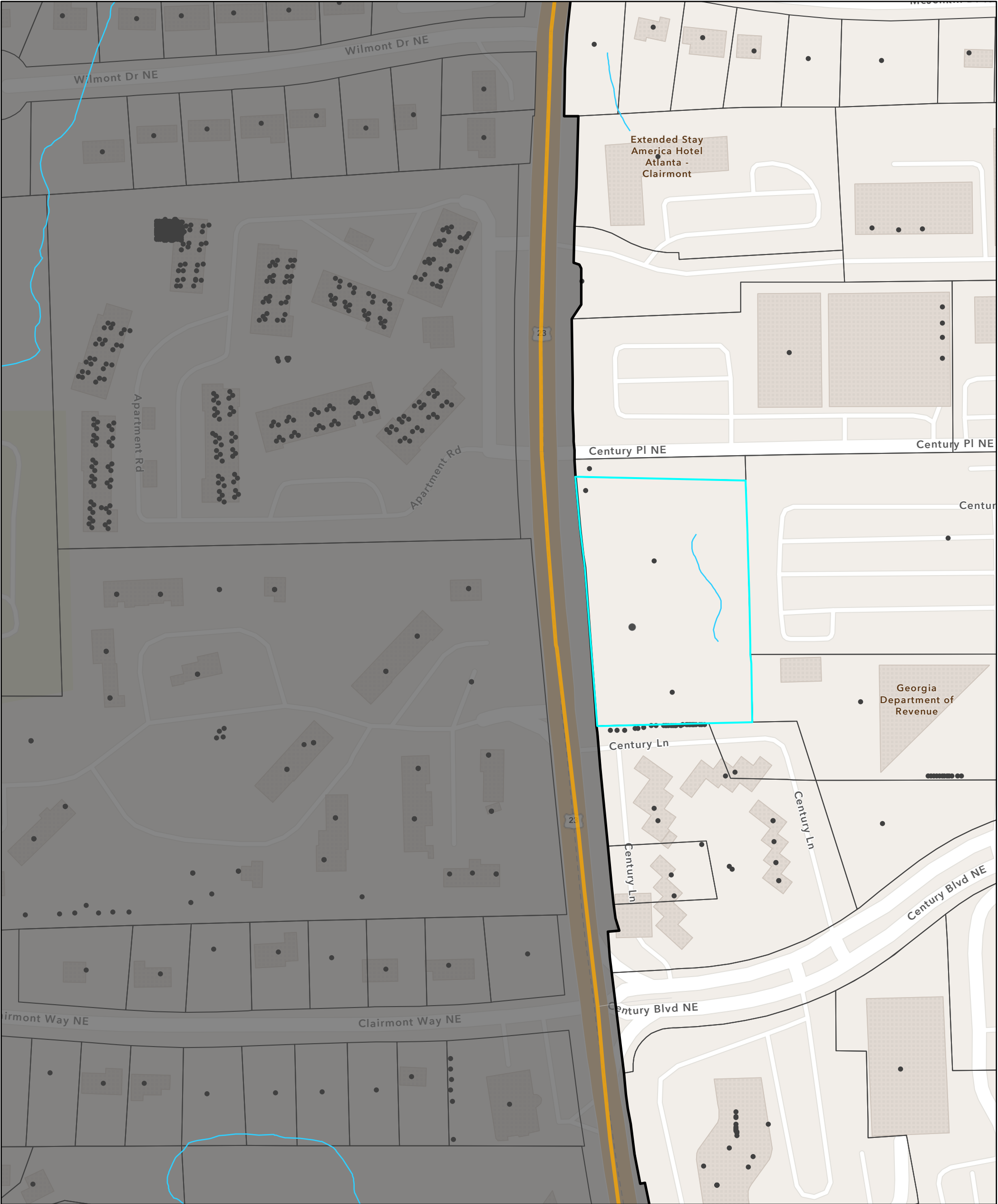
0 0.02 0.04 0.08 mi
0 0.03 0.07 0.13 km

Esri Community Maps Contributors, City of Atlanta, © OpenStreetMap, Microsoft, Esri, TomTom, Garmin, SafeGraph, GeoTechnologies, Inc, METI/NASA, USGS, EPA, NPS, US Census Bureau, USDA, USFWS

Web AppBuilder for ArcGIS

Esri Community Maps Contributors, City of Atlanta, © OpenStreetMap, Microsoft, Esri, TomTom, Garmin, SafeGraph, GeoTechnologies, Inc, METI/NASA, USGS, EPA, NPS, US Census Bureau, USDA, USFWS |

3063 Clairmont Rd - Location Map



1/27/2025, 4:23:32 PM

City Limits

Address

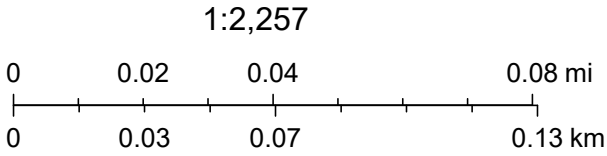
DeKalb County Streams

Road Development Class

Boulevard

Local

DeKalb County Tax Parcels






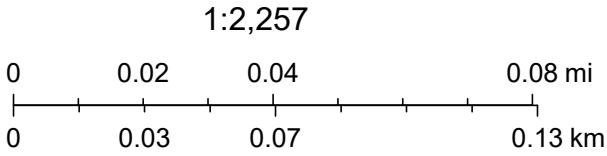
Esri Community Maps Contributors, City of Atlanta, © OpenStreetMap, Microsoft, Esri, TomTom, Garmin, SafeGraph, GeoTechnologies, Inc, METI/NASA, USGS, EPA, NPS, US Census Bureau, USDA, USFWS

3063 Clairmont Rd - Aerial Map



1/27/2025, 4:17:54 PM

-  City Limits
-  Address
-  DeKalb County Tax Parcels



Esri Community Maps Contributors, City of Atlanta, © OpenStreetMap, Microsoft, Esri, TomTom, Garmin, SafeGraph, GeoTechnologies, Inc, METI/NASA, USGS, EPA, NPS, US Census Bureau, USDA, USFWS