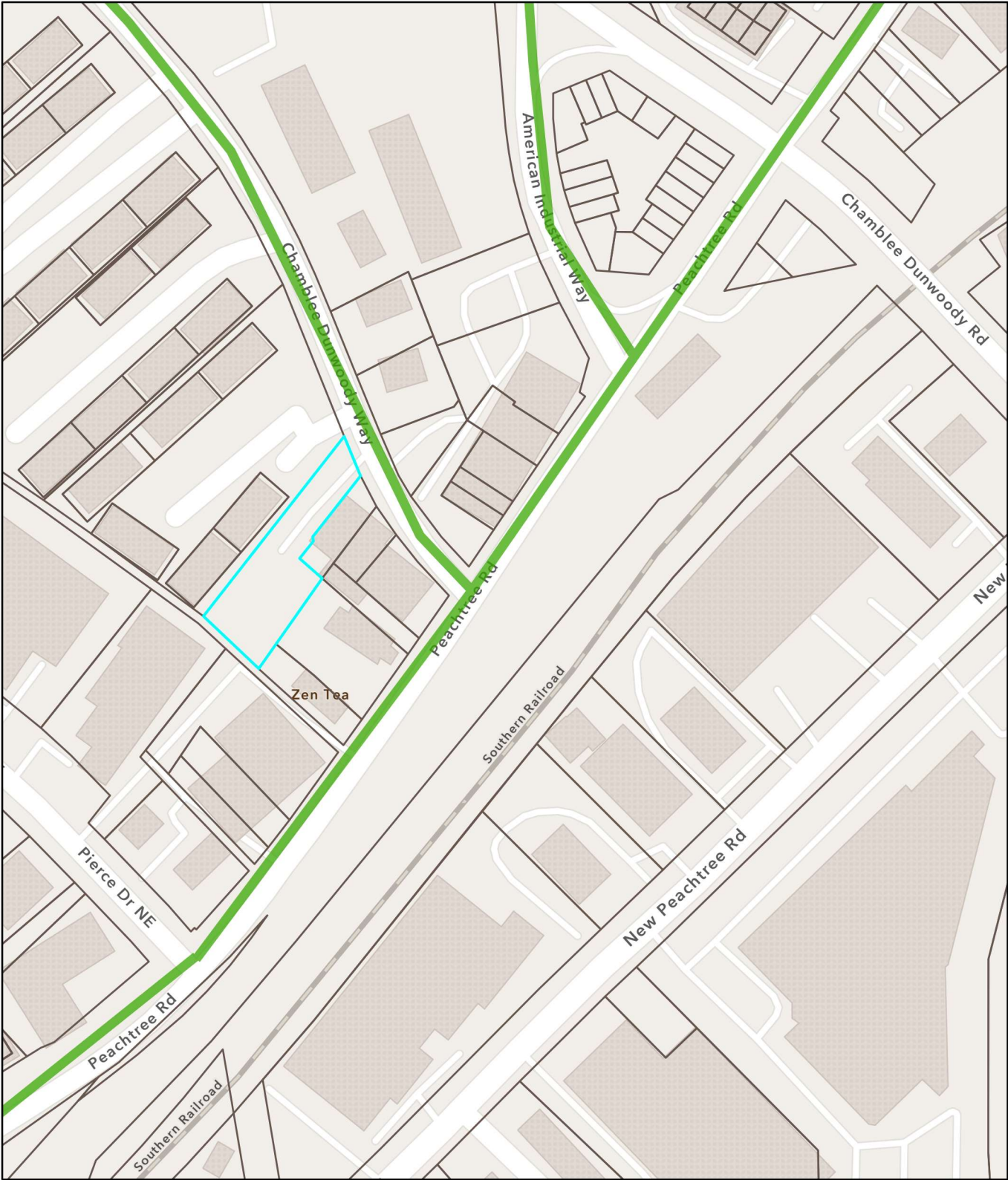



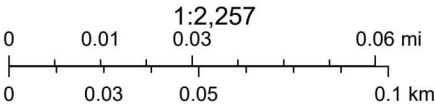


# Location Map - 3460 Chamblee Dunwoody Way



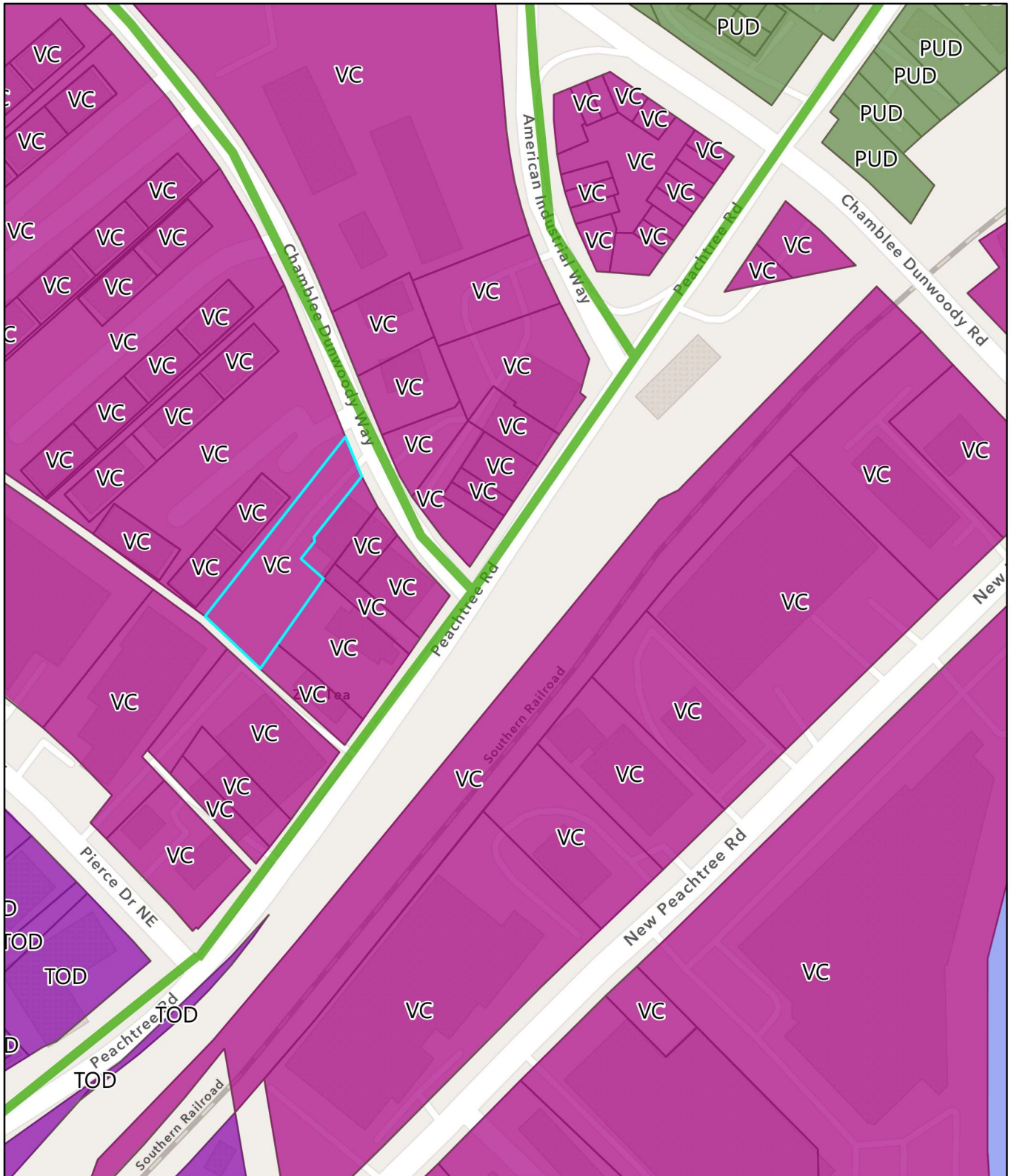
7/3/2024, 2:59:27 PM

-  Chamblee City Limits
-  Storefront Streets
-  DeKalb County Tax Parcels



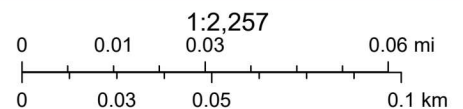
Esri Community Maps Contributors, © OpenStreetMap, Microsoft, Esri, TomTom, Garmin, SafeGraph, GeoTechnologies, Inc, METI/NASA, USGS, EPA, NPS, US Census Bureau, USDA, USFWS

# Zoning Map - 3460 Chamblee Dunwoody Way



7/3/2024, 2:52:22 PM

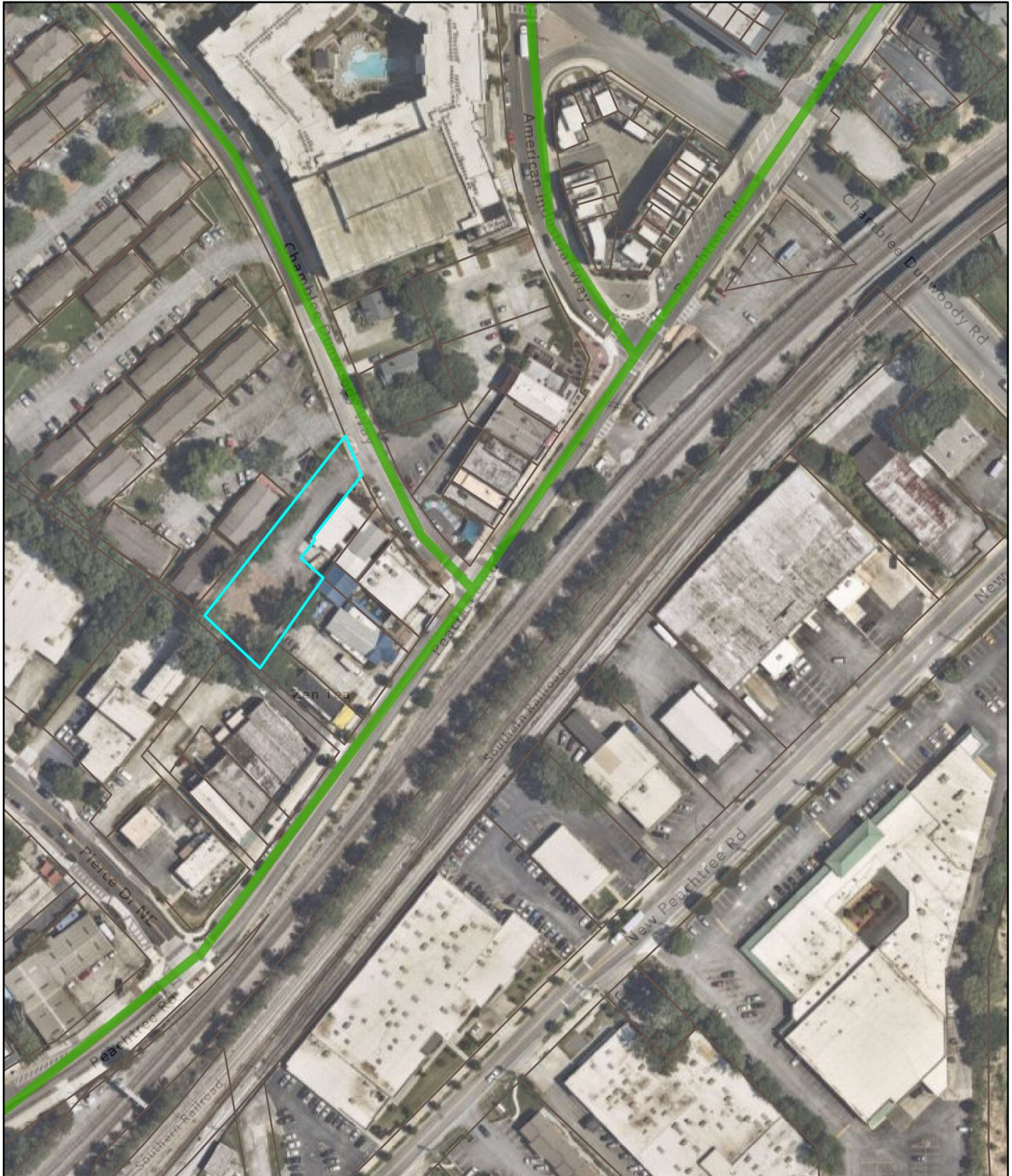
- Chamblee City Limits
- Planned Unit Development
- Storefront Streets
- Transit Oriented Development
- Tax Parcel Zoning
- Village Commercial
- Industrial Transitional
- DeKalb County Tax Parcels




Esri Community Maps Contributors, © OpenStreetMap, Microsoft, Esri, TomTom, Garmin, SafeGraph, GeoTechnologies, Inc, METI/NASA, USGS, EPA, NPS, US Census Bureau, USDA, USFWS



# Aerial Map - 3460 Chamblee Dunwoody Way



7/3/2024, 3:01:31 PM

-  Chamblee City Limits
-  Storefront Streets
-  DeKalb County Tax Parcels



Nearmap, Esri Community Maps Contributors, © OpenStreetMap, Microsoft, Esri, TomTom, Garmin, SafeGraph, GeoTechnologies, Inc, METI/NASA, USGS, EPA, NPS, US Census Bureau, USDA, USFWS

Web AppBuilder for ArcGIS  
Esri, TomTom, Garmin, FAO, NOAA, USGS, EPA, USFWS | Nearmap |