

EQUIPMENT USED:
A RICHMOND 223 TOTAL STATION WAS USED TO OBTAIN ANGULAR MEASUREMENTS
AND DISTANCE MEASUREMENTS.
A BRUNNEN 1000-40 FREQUENCY COUNTER WAS USED FOR ESTABLISHING
CONTROL. A NEVADA ADJUSTED RITE SURVEY WAS PERFORMED AND ADJUSTED
BY RELATIVE POSITIONAL ACCURACY.
CLOSURE STATEMENT:
THIS REPORT WAS PREPARED FOR THE RECORD AND IS NOT TO BE USED FOR ANY OTHER PURPOSE.

TRUCK #1
AREA: 270.3-7 SQ. FT. OR 6,000 AC.
CURRENT OWNER: BOEING TULLY,
CHG. 21 761 402, 640
TAMPA FL 336 301
ADDRESS: 550 PRAIRIE HOUNDS BOULEVARD

TRAC: 41
 ARE: 270 2 7 80, PF, OR 6, 333 AC,
 CURRENT OWNER, 850 REALTY LLP,
 CBS, 21701 P25, 880
 109 00 222 501
 109 00 21 11 01 13/08/18 XVI

JURISDICTION: DENVER COUNTY
ZONING: R-100K, D-7K
BUILDING SETBACKS:
FRONT - 75'
SIDE - 20'
REAR - 30'

TRANSIT LANE: BUFFER BANDS: TUBERO STATE OF 75' REQUIRED
WHEREAS MULTIPLE LANE ZONING IS AN ADJACENT TO ADVANCEMENT (N.)

TRAC #2
AREA=74.10 SQ. FT. OS=2023 AC.
MINIMUM BUILDING HEIGHT 5 STORIES
MINIMUM LOT WIDTH = 500'

CURRENT OWNER: DE REALTY HOLDINGS, LLC
 CR. 20811 P2, 800
 TAX PAYER ID #: 15-0024-00-03
 ADDRESS: 1800 PHOENIX BLVD, SUITE 1000
 JURISDICTION: DEKALB COUNTY
 ZONING: MANDL 57-01
 BUILDING SETBACK: FRONT - 25'
 REAR - 30'

TRANSITIONAL BUFFER UNDISTURBED STATE, OF 75 REQUIRED.
ADJACENT TO OPEN SPACE ZONING IN ADJACENT TO ANY A PERMIT N.)
ZONING (10/19/21)

TIDALCO #3
 APPROX 1000 P.M. ON 7/20/2006
 CLIENT OWNER, JAMES W. F.B. JR.
 CBA, 11701 P.O. 23
 TAX #/ACRES 12 E. W. 202.00 AC.

ADDRESS: 5867 PEACHTREE ROYAL, ROULEAU, CAN.
JURISDICTION: DENVER COUNTY
ZONING: MICH. 31-4C
BUILDING DETAIL: FRONT - 19'
MID - 40'
REAR - 30'

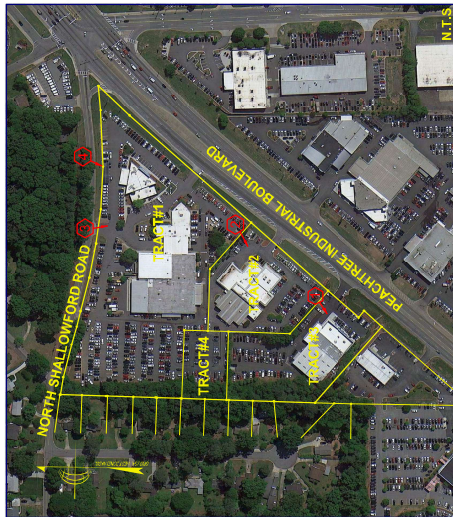
ZONE(CRITICAL ZONE) IS ADJACENT TO AVOID (PERMIT) 27
 MAXIMUM BUILDING HEIGHT 5 STOREYS
 MINIMUM LOT WIDTH - 100'
 TRAC 74

ARE A - 23,600 SQ. FT., ORLO 2908 AC.
CURRENT OWNER - DR. REGINA T. HOLLMAN, L.L.P.
SEC. 2001 P.O. BOX 500
TAX PARCEL ID# - 15-07245-038
ADDRESS - 5550 PEACH-TREE INDUSTRIAL BOULEVARD
JUPITER FL 33408 DEKALB COUNTY
ZONING - MANUFACTURING
BUILDING DISTANCE FRONT - 75'

TRANS 4 TONAL BLESS JUNE 1988, 1989, 1990, 1991, 1992, 1993, 1994, 1995, 1996, 1997, 1998, 1999, 2000, 2001, 2002, 2003, 2004, 2005, 2006, 2007, 2008, 2009, 2010, 2011, 2012, 2013, 2014, 2015, 2016, 2017, 2018, 2019, 2020, 2021, 2022, 2023, 2024, 2025, 2026, 2027, 2028, 2029, 2030, 2031, 2032, 2033, 2034, 2035, 2036, 2037, 2038, 2039, 2040, 2041, 2042, 2043, 2044, 2045, 2046, 2047, 2048, 2049, 2050, 2051, 2052, 2053, 2054, 2055, 2056, 2057, 2058, 2059, 2060, 2061, 2062, 2063, 2064, 2065, 2066, 2067, 2068, 2069, 2070, 2071, 2072, 2073, 2074, 2075, 2076, 2077, 2078, 2079, 2080, 2081, 2082, 2083, 2084, 2085, 2086, 2087, 2088, 2089, 2090, 2091, 2092, 2093, 2094, 2095, 2096, 2097, 2098, 2099, 2100, 2101, 2102, 2103, 2104, 2105, 2106, 2107, 2108, 2109, 2110, 2111, 2112, 2113, 2114, 2115, 2116, 2117, 2118, 2119, 2120, 2121, 2122, 2123, 2124, 2125, 2126, 2127, 2128, 2129, 2130, 2131, 2132, 2133, 2134, 2135, 2136, 2137, 2138, 2139, 2140, 2141, 2142, 2143, 2144, 2145, 2146, 2147, 2148, 2149, 2150, 2151, 2152, 2153, 2154, 2155, 2156, 2157, 2158, 2159, 2160, 2161, 2162, 2163, 2164, 2165, 2166, 2167, 2168, 2169, 2170, 2171, 2172, 2173, 2174, 2175, 2176, 2177, 2178, 2179, 2180, 2181, 2182, 2183, 2184, 2185, 2186, 2187, 2188, 2189, 2190, 2191, 2192, 2193, 2194, 2195, 2196, 2197, 2198, 2199, 2200, 2201, 2202, 2203, 2204, 2205, 2206, 2207, 2208, 2209, 2210, 2211, 2212, 2213, 2214, 2215, 2216, 2217, 2218, 2219, 2220, 2221, 2222, 2223, 2224, 2225, 2226, 2227, 2228, 2229, 2230, 2231, 2232, 2233, 2234, 2235, 2236, 2237, 2238, 2239, 2240, 2241, 2242, 2243, 2244, 2245, 2246, 2247, 2248, 2249, 2250, 2251, 2252, 2253, 2254, 2255, 2256, 2257, 2258, 2259, 2260, 2261, 2262, 2263, 2264, 2265, 2266, 2267, 2268, 2269, 2270, 2271, 2272, 2273, 2274, 2275, 2276, 2277, 2278, 2279, 2280, 2281, 2282, 2283, 2284, 2285, 2286, 2287, 2288, 2289, 2290, 2291, 2292, 2293, 2294, 2295, 2296, 2297, 2298, 2299, 2300, 2301, 2302, 2303, 2304, 2305, 2306, 2307, 2308, 2309, 2310, 2311, 2312, 2313, 2314, 2315, 2316, 2317, 2318, 2319, 2320, 2321, 2322, 2323, 2324, 2325, 2326, 2327, 2328, 2329, 2330, 2331, 2332, 2333, 2334, 2335, 2336, 2337, 2338, 2339, 2340, 2341, 2342, 2343, 2344, 2345, 2346, 2347, 2348, 2349, 2350, 2351, 2352, 2353, 2354, 2355, 2356, 2357, 2358, 2359, 2360, 2361, 2362, 2363, 2364, 2365, 2366, 2367, 2368, 2369, 2370, 2371, 2372, 2373, 2374, 2375, 2376, 2377, 2378, 2379, 2380, 2381, 2382, 2383, 2384, 2385, 2386, 2387, 2388, 2389, 2390, 2391, 2392, 2393, 2394, 2395, 2396, 2397, 2398, 2399, 2400, 2401, 2402, 2403, 2404, 2405, 2406, 2407, 2408, 2409, 2410, 2411, 2412, 2413, 2414, 2415, 2416, 2417, 2418, 2419, 2420, 2421, 2422, 2423, 2424, 2425, 2426, 2427, 2428, 2429, 2430, 2431, 2432, 2433, 2434, 2435, 2436, 2437, 2438, 2439, 2440, 2441, 2442, 2443, 2444, 2445, 2446, 2447, 2448, 2449, 2450, 2451, 2452, 2453, 2454, 2455, 2456, 2457, 2458, 2459, 2460, 2461, 2462, 2463, 2464, 2465, 2466, 2467, 2468, 2469, 2470, 2471, 2472, 2473, 2474, 2475, 2476, 2477, 2478, 2479, 2480, 2481, 2482, 2483, 2484, 2485, 2486, 2487, 2488, 2489, 2490, 2491, 2492, 2493, 2494, 2495, 2496, 2497, 2498, 2499, 2500, 2501, 2502, 2503, 2504, 2505, 2506, 2507, 2508, 2509, 2510, 2511, 2512, 2513, 2514, 2515, 2516, 2517, 2518, 2519, 2520, 2521, 2522, 2523, 2524, 2525, 2526, 2527, 2528, 2529, 2530, 2531, 2532, 2533, 2534, 2535, 2536, 2537, 2538, 2539, 2540, 2541, 2542, 2543, 2544, 2545, 2546, 2547, 2548, 2549, 2550, 2551, 2552, 2553, 2554, 2555, 2556, 2557, 2558, 2559, 2560, 2561, 2562, 2563, 2564, 2565, 2566, 2567, 2568, 2569, 2570, 2571, 2572, 2573, 2574, 2575, 2576, 2577, 2578, 2579, 2580, 2581, 2582, 2583, 2584, 2585, 2586, 2587, 2588, 2589, 2590, 2591, 2592, 2593, 2594, 2595, 2596, 2597, 2598, 2599, 2600, 2601, 2602, 2603, 2604, 2605, 2606, 2607, 2608, 2609, 2610, 2611, 2612, 2613, 2614, 2615, 2616, 2617, 2618, 2619, 2620, 2621, 2622, 2623, 2624, 2625, 2626, 2627, 2628, 2629, 2630, 2631, 2632, 2633, 2634, 2635, 2636, 2637, 2638, 2639, 2640, 2641, 2642, 2643, 2644, 2645, 2646, 2647, 2648, 2649, 2650, 2651, 2652, 2653, 2654, 2655, 2656, 2657, 2658, 2659, 2660, 2661, 2662, 2663, 2664, 2665, 2666, 2667, 266

MINERALI C. 79.0374 • 6007

5 **PICTURE LOCATION AND DIRECTION**



RESEARCH REPORTS



PHOTO #1



PHOTO #2



PHOTO #3



PHOTO #4

**TOPOGRAPHIC SURVEY
FOR
PRO BUILDING SYSTEMS, INC.
(5880 PEACHTREE INDUSTRIAL BLVD)
LOCATED IN
LAND LOT 323, 18TH DISTRICT
DEKALB COUNTY, GEORGIA**

NOT TO SCALE
LAT - 33°54'30.20"N
LONG - 84°17'53.7"W



REGULAR SPACES	644
HANDCAP SPACES	7
TOTAL	651

TRACT A1: 27.0 SQ. FT. - 1.0M SQUARE AC.
TRACT A2: 74,780 SQ. FT. - 0.8750 AC.
TRACT A3: 87,760 SQ. FT. - 0.9909 AC.
TRACT A4: 25,505 SQ. FT. - 0.5848 AC.
CORNELL - 407.552 SQ. FT. - 0.9204 AC.

ACCORDING TO "THE NEW" FLOOD INSURANCE RATE MAPS OF OKALA COUNTY, GEORGIA (PART NUMBER: 138000002), "BATHS ARE LOCATED IN THE NORTHWEST CORNER OF THIS PROPERTY WITHIN A SPECIAL FLOOD HAZARDOUS AREA."

5. FINAL PLAT FOR SUBDIVISION PROPERTY OF EARL NORMAN AND QUELL DONCELL
RECORDED IN DEEDS BOOK 485
AMONG THE LAND RECORDS OF DENAUE COUNTY, GEORGIA.

2. LIT CLAIM DEED
9-10-61 CLUMP 1 FINAL LTG INC.
RECORDED IN DEEDS BOOK 485
AMONG RECORDS

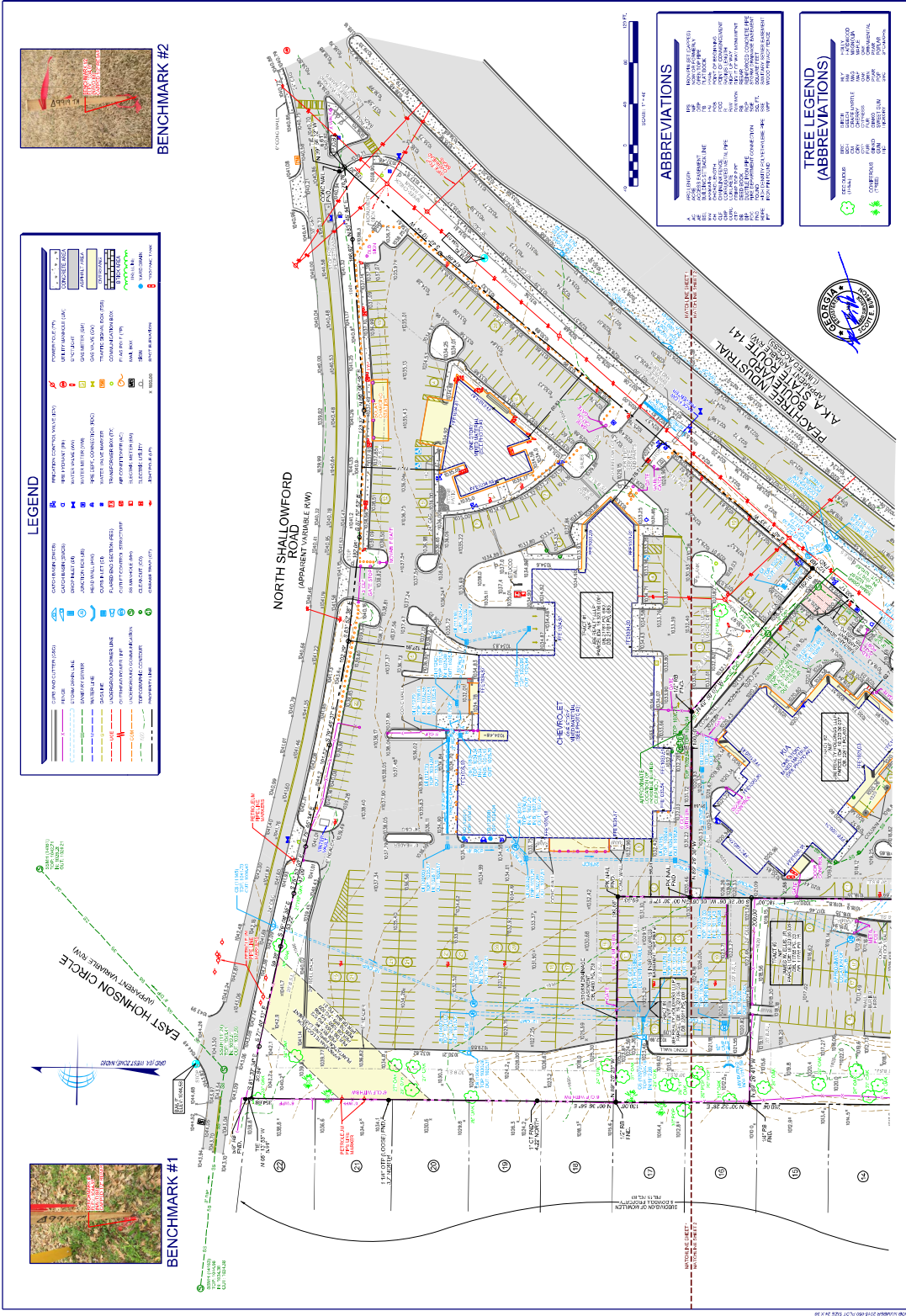
THIS SURVEY WAS PREPARED IN CONFORMITY WITH THE TECHNICAL STANDARDS FOR REAL PROPERTY SURVEYS IN GEORGIA AS SET FORTH IN CHAPTER 180C OF THE RULES OF THE GEORGIA BOARD OF REGISTRATION FOR PROFESSIONAL ENGINEERING AND SURVEYING AND AS SET FORTH IN THE GEORGIA PLAT ACT O.C.G.A. § 56-0-1.



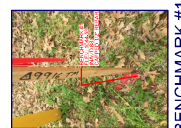
Report Date	2017-2020	(Y)	(M)	(D)
Display Date	26 Jun 2017			
File Name	C:\Program Files\Microsoft Office\Office15\Excel.exe			
MCC				
DMS				
Account ID				
Date	06/26/2017			
State	TX			
Page	1 of 1			

TOPOGRAPHIC SURVEY
FOR
PRO BUILDING SYSTEMS, INC.,
(PEACHTREE INDUSTRIAL BLVD)
LOCATED IN
LAND LOT 323, 18TH DISTRICT
DEKALB COUNTY, GEORGIA

SHEET NO. $\frac{1}{3}$ ORDER NO. 1111111111



BENCHMARK #2



BENCHMARK #1

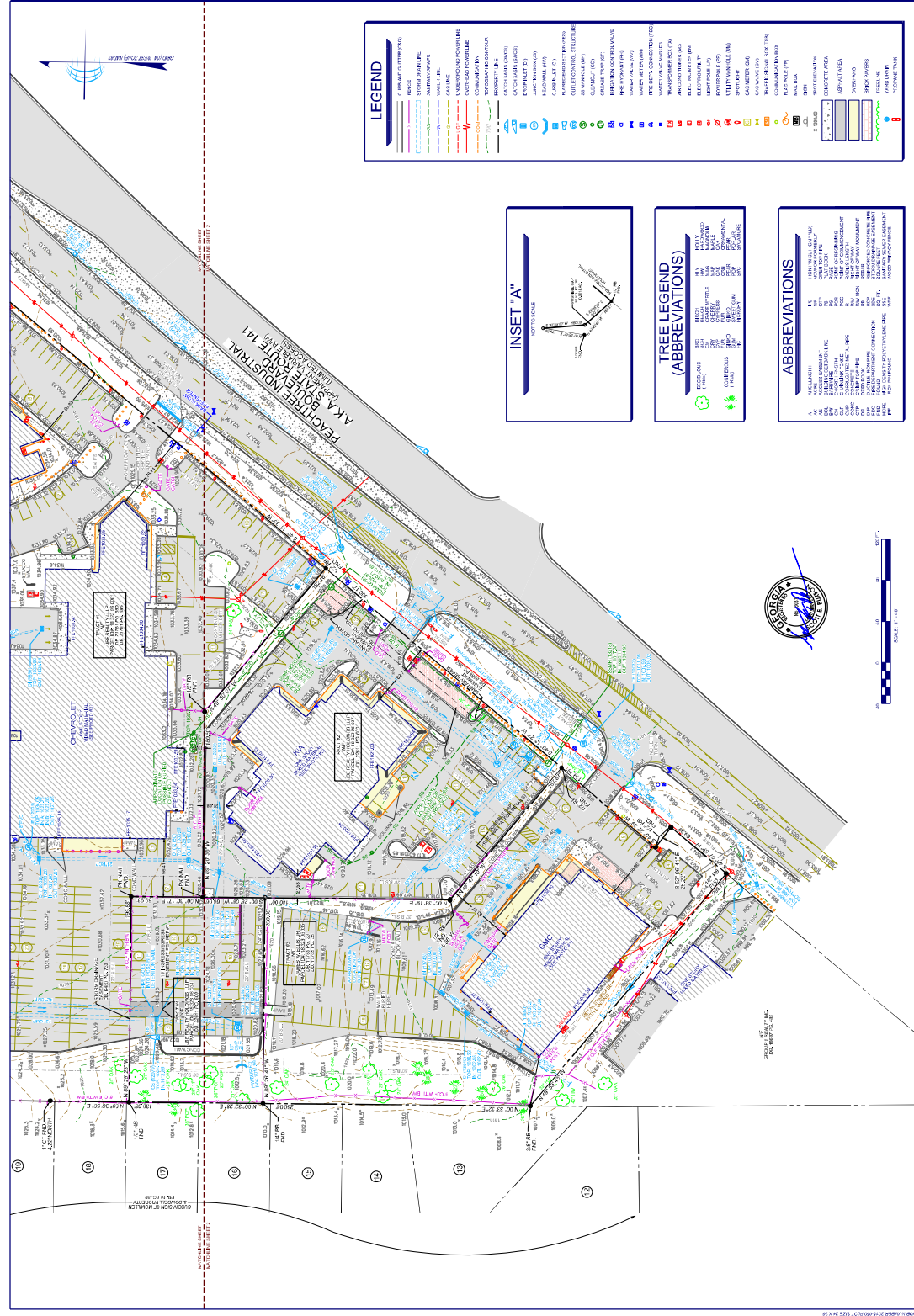
LEGEND

GENERAL	UTILITY	PROPERTY	ROAD	WATER	VEGETATION	STRUCTURE	OBSTACLE	ADDITIONAL
1" WATER MAIN	1" GAS MAIN	1" ASPHALT	1" CEMENT	1" GRASS	1" CONCRETE	1" BRICK	1" METAL	1" SIGN
2" WATER MAIN	2" GAS MAIN	2" ASPHALT	2" CEMENT	2" GRASS	2" CONCRETE	2" BRICK	2" METAL	2" SIGN
3" WATER MAIN	3" GAS MAIN	3" ASPHALT	3" CEMENT	3" GRASS	3" CONCRETE	3" BRICK	3" METAL	3" SIGN
4" WATER MAIN	4" GAS MAIN	4" ASPHALT	4" CEMENT	4" GRASS	4" CONCRETE	4" BRICK	4" METAL	4" SIGN
5" WATER MAIN	5" GAS MAIN	5" ASPHALT	5" CEMENT	5" GRASS	5" CONCRETE	5" BRICK	5" METAL	5" SIGN
6" WATER MAIN	6" GAS MAIN	6" ASPHALT	6" CEMENT	6" GRASS	6" CONCRETE	6" BRICK	6" METAL	6" SIGN
8" WATER MAIN	8" GAS MAIN	8" ASPHALT	8" CEMENT	8" GRASS	8" CONCRETE	8" BRICK	8" METAL	8" SIGN
10" WATER MAIN	10" GAS MAIN	10" ASPHALT	10" CEMENT	10" GRASS	10" CONCRETE	10" BRICK	10" METAL	10" SIGN
12" WATER MAIN	12" GAS MAIN	12" ASPHALT	12" CEMENT	12" GRASS	12" CONCRETE	12" BRICK	12" METAL	12" SIGN
15" WATER MAIN	15" GAS MAIN	15" ASPHALT	15" CEMENT	15" GRASS	15" CONCRETE	15" BRICK	15" METAL	15" SIGN
18" WATER MAIN	18" GAS MAIN	18" ASPHALT	18" CEMENT	18" GRASS	18" CONCRETE	18" BRICK	18" METAL	18" SIGN
21" WATER MAIN	21" GAS MAIN	21" ASPHALT	21" CEMENT	21" GRASS	21" CONCRETE	21" BRICK	21" METAL	21" SIGN
24" WATER MAIN	24" GAS MAIN	24" ASPHALT	24" CEMENT	24" GRASS	24" CONCRETE	24" BRICK	24" METAL	24" SIGN
27" WATER MAIN	27" GAS MAIN	27" ASPHALT	27" CEMENT	27" GRASS	27" CONCRETE	27" BRICK	27" METAL	27" SIGN
30" WATER MAIN	30" GAS MAIN	30" ASPHALT	30" CEMENT	30" GRASS	30" CONCRETE	30" BRICK	30" METAL	30" SIGN
36" WATER MAIN	36" GAS MAIN	36" ASPHALT	36" CEMENT	36" GRASS	36" CONCRETE	36" BRICK	36" METAL	36" SIGN
42" WATER MAIN	42" GAS MAIN	42" ASPHALT	42" CEMENT	42" GRASS	42" CONCRETE	42" BRICK	42" METAL	42" SIGN
48" WATER MAIN	48" GAS MAIN	48" ASPHALT	48" CEMENT	48" GRASS	48" CONCRETE	48" BRICK	48" METAL	48" SIGN
54" WATER MAIN	54" GAS MAIN	54" ASPHALT	54" CEMENT	54" GRASS	54" CONCRETE	54" BRICK	54" METAL	54" SIGN
60" WATER MAIN	60" GAS MAIN	60" ASPHALT	60" CEMENT	60" GRASS	60" CONCRETE	60" BRICK	60" METAL	60" SIGN
66" WATER MAIN	66" GAS MAIN	66" ASPHALT	66" CEMENT	66" GRASS	66" CONCRETE	66" BRICK	66" METAL	66" SIGN
72" WATER MAIN	72" GAS MAIN	72" ASPHALT	72" CEMENT	72" GRASS	72" CONCRETE	72" BRICK	72" METAL	72" SIGN
78" WATER MAIN	78" GAS MAIN	78" ASPHALT	78" CEMENT	78" GRASS	78" CONCRETE	78" BRICK	78" METAL	78" SIGN
84" WATER MAIN	84" GAS MAIN	84" ASPHALT	84" CEMENT	84" GRASS	84" CONCRETE	84" BRICK	84" METAL	84" SIGN
90" WATER MAIN	90" GAS MAIN	90" ASPHALT	90" CEMENT	90" GRASS	90" CONCRETE	90" BRICK	90" METAL	90" SIGN
96" WATER MAIN	96" GAS MAIN	96" ASPHALT	96" CEMENT	96" GRASS	96" CONCRETE	96" BRICK	96" METAL	96" SIGN
102" WATER MAIN	102" GAS MAIN	102" ASPHALT	102" CEMENT	102" GRASS	102" CONCRETE	102" BRICK	102" METAL	102" SIGN
108" WATER MAIN	108" GAS MAIN	108" ASPHALT	108" CEMENT	108" GRASS	108" CONCRETE	108" BRICK	108" METAL	108" SIGN
114" WATER MAIN	114" GAS MAIN	114" ASPHALT	114" CEMENT	114" GRASS	114" CONCRETE	114" BRICK	114" METAL	114" SIGN
120" WATER MAIN	120" GAS MAIN	120" ASPHALT	120" CEMENT	120" GRASS	120" CONCRETE	120" BRICK	120" METAL	120" SIGN
126" WATER MAIN	126" GAS MAIN	126" ASPHALT	126" CEMENT	126" GRASS	126" CONCRETE	126" BRICK	126" METAL	126" SIGN
132" WATER MAIN	132" GAS MAIN	132" ASPHALT	132" CEMENT	132" GRASS	132" CONCRETE	132" BRICK	132" METAL	132" SIGN
138" WATER MAIN	138" GAS MAIN	138" ASPHALT	138" CEMENT	138" GRASS	138" CONCRETE	138" BRICK	138" METAL	138" SIGN
144" WATER MAIN	144" GAS MAIN	144" ASPHALT	144" CEMENT	144" GRASS	144" CONCRETE	144" BRICK	144" METAL	144" SIGN
150" WATER MAIN	150" GAS MAIN	150" ASPHALT	150" CEMENT	150" GRASS	150" CONCRETE	150" BRICK	150" METAL	150" SIGN
156" WATER MAIN	156" GAS MAIN	156" ASPHALT	156" CEMENT	156" GRASS	156" CONCRETE	156" BRICK	156" METAL	156" SIGN
162" WATER MAIN	162" GAS MAIN	162" ASPHALT	162" CEMENT	162" GRASS	162" CONCRETE	162" BRICK	162" METAL	162" SIGN
168" WATER MAIN	168" GAS MAIN	168" ASPHALT	168" CEMENT	168" GRASS	168" CONCRETE	168" BRICK	168" METAL	168" SIGN
174" WATER MAIN	174" GAS MAIN	174" ASPHALT	174" CEMENT	174" GRASS	174" CONCRETE	174" BRICK	174" METAL	174" SIGN
180" WATER MAIN	180" GAS MAIN	180" ASPHALT	180" CEMENT	180" GRASS	180" CONCRETE	180" BRICK	180" METAL	180" SIGN
186" WATER MAIN	186" GAS MAIN	186" ASPHALT	186" CEMENT	186" GRASS	186" CONCRETE	186" BRICK	186" METAL	186" SIGN
192" WATER MAIN	192" GAS MAIN	192" ASPHALT	192" CEMENT	192" GRASS	192" CONCRETE	192" BRICK	192" METAL	192" SIGN
198" WATER MAIN	198" GAS MAIN	198" ASPHALT	198" CEMENT	198" GRASS	198" CONCRETE	198" BRICK	198" METAL	198" SIGN
204" WATER MAIN	204" GAS MAIN	204" ASPHALT	204" CEMENT	204" GRASS	204" CONCRETE	204" BRICK	204" METAL	204" SIGN
210" WATER MAIN	210" GAS MAIN	210" ASPHALT	210" CEMENT	210" GRASS	210" CONCRETE	210" BRICK	210" METAL	210" SIGN
216" WATER MAIN	216" GAS MAIN	216" ASPHALT	216" CEMENT	216" GRASS	216" CONCRETE	216" BRICK	216" METAL	216" SIGN
222" WATER MAIN	222" GAS MAIN	222" ASPHALT	222" CEMENT	222" GRASS	222" CONCRETE	222" BRICK	222" METAL	222" SIGN
228" WATER MAIN	228" GAS MAIN	228" ASPHALT	228" CEMENT	228" GRASS	228" CONCRETE	228" BRICK	228" METAL	228" SIGN
234" WATER MAIN	234" GAS MAIN	234" ASPHALT	234" CEMENT	234" GRASS	234" CONCRETE	234" BRICK	234" METAL	234" SIGN
240" WATER MAIN	240" GAS MAIN	240" ASPHALT	240" CEMENT	240" GRASS	240" CONCRETE	240" BRICK	240" METAL	240" SIGN
246" WATER MAIN	246" GAS MAIN	246" ASPHALT	246" CEMENT	246" GRASS	246" CONCRETE	246" BRICK	246" METAL	246" SIGN
252" WATER MAIN	252" GAS MAIN	252" ASPHALT	252" CEMENT	252" GRASS	252" CONCRETE	252" BRICK	252" METAL	252" SIGN
258" WATER MAIN	258" GAS MAIN	258" ASPHALT	258" CEMENT	258" GRASS	258" CONCRETE	258" BRICK	258" METAL	258" SIGN
264" WATER MAIN	264" GAS MAIN	264" ASPHALT	264" CEMENT	264" GRASS	264" CONCRETE	264" BRICK	264" METAL	264" SIGN
270" WATER MAIN	270" GAS MAIN	270" ASPHALT	270" CEMENT	270" GRASS	270" CONCRETE	270" BRICK	270" METAL	270" SIGN
276" WATER MAIN	276" GAS MAIN	276" ASPHALT	276" CEMENT	276" GRASS	276" CONCRETE	276" BRICK	276" METAL	276" SIGN
282" WATER MAIN	282" GAS MAIN	282" ASPHALT	282" CEMENT	282" GRASS	282" CONCRETE	282" BRICK	282" METAL	282" SIGN
288" WATER MAIN	288" GAS MAIN	288" ASPHALT	288" CEMENT	288" GRASS	288" CONCRETE	288" BRICK	288" METAL	288" SIGN
294" WATER MAIN	294" GAS MAIN	294" ASPHALT	294" CEMENT	294" GRASS	294" CONCRETE	294" BRICK	294" METAL	294" SIGN
300" WATER MAIN	300" GAS MAIN	300" ASPHALT	300" CEMENT	300" GRASS	300" CONCRETE	300" BRICK	300" METAL	300" SIGN
306" WATER MAIN	306" GAS MAIN	306" ASPHALT	306" CEMENT	306" GRASS	306" CONCRETE	306" BRICK	306" METAL	306" SIGN
312" WATER MAIN	312" GAS MAIN	312" ASPHALT	312" CEMENT	312" GRASS	312" CONCRETE	312" BRICK	312" METAL	312" SIGN
318" WATER MAIN	318" GAS MAIN	318" ASPHALT	318" CEMENT	318" GRASS	318" CONCRETE	318" BRICK	318" METAL	318" SIGN
324" WATER MAIN	324" GAS MAIN	324" ASPHALT	324" CEMENT	324" GRASS	324" CONCRETE	324" BRICK	324" METAL	324" SIGN
330" WATER MAIN	330" GAS MAIN	330" ASPHALT	330" CEMENT	330" GRASS	330" CONCRETE	330" BRICK	330" METAL	330" SIGN
336" WATER MAIN	336" GAS MAIN	336" ASPHALT	336" CEMENT	336" GRASS	336" CONCRETE	336" BRICK	336" METAL	336" SIGN
342" WATER MAIN	342" GAS MAIN	342" ASPHALT	342" CEMENT	342" GRASS	342" CONCRETE	342" BRICK	342" METAL	342" SIGN
348" WATER MAIN	348" GAS MAIN	348" ASPHALT	348" CEMENT	348" GRASS	348" CONCRETE	348" BRICK	348" METAL	348" SIGN
354" WATER MAIN	354" GAS MAIN	354" ASPHALT	354" CEMENT	354" GRASS	354" CONCRETE	354" BRICK	354" METAL	354" SIGN
360" WATER MAIN	360" GAS MAIN	360" ASPHALT	360" CEMENT	360" GRASS	360" CONCRETE	360" BRICK	360" METAL	360" SIGN
366" WATER MAIN	366" GAS MAIN	366" ASPHALT	366" CEMENT	366" GRASS	366" CONCRETE	366" BRICK	366" METAL	366" SIGN
372" WATER MAIN	372" GAS MAIN	372" ASPHALT	372" CEMENT	372" GRASS	372" CONCRETE	372" BRICK	372" METAL	372" SIGN
378" WATER MAIN	378" GAS MAIN	378" ASPHALT	378" CEMENT	378" GRASS	378" CONCRETE	378" BRICK	378" METAL	378" SIGN
384" WATER MAIN	384" GAS MAIN	384" ASPHALT	384" CEMENT	384" GRASS	384" CONCRETE	384" BRICK	384" METAL	384" SIGN
390" WATER MAIN	390" GAS MAIN	390" ASPHALT	390" CEMENT	390" GRASS	390" CONCRETE	390" BRICK	390" METAL	390" SIGN
396" WATER MAIN	396" GAS MAIN	396" ASPHALT	396" CEMENT	396" GRASS	396" CONCRETE	396" BRICK	396" METAL	396" SIGN
402" WATER MAIN	402" GAS MAIN	402" ASPHALT	402" CEMENT	402" GRASS	402" CONCRETE	402" BRICK	402" METAL	402" SIGN
408" WATER MAIN	408" GAS MAIN	408" ASPHALT	408" CEMENT	408" GRASS	408" CONCRETE	408" BRICK	408" METAL	408" SIGN
414" WATER MAIN	414" GAS MAIN	414" ASPHALT	414" CEMENT	414" GRASS	414" CONCRETE	414" BRICK	414" METAL	414" SIGN
420" WATER MAIN	420" GAS MAIN	420" ASPHALT	420" CEMENT	420" GRASS	420" CONCRETE	420" BRICK	420" METAL	420" SIGN
426" WATER MAIN	426" GAS MAIN	426" ASPHALT	426" CEMENT	426" GRASS	426" CONCRETE	426" BRICK	426" METAL	426" SIGN
432" WATER MAIN	432" GAS MAIN	432" ASPHALT	432" CEMENT	432" GRASS	432" CONCRETE	432" BRICK	432" METAL	432" SIGN
438" WATER MAIN	438" GAS MAIN	438" ASPHALT	438" CEMENT	438" GRASS	438" CONCRETE	438" BRICK	438" METAL	438" SIGN
444" WATER MAIN	444" GAS MAIN	444" ASPHALT	444" CEMENT	444" GRASS	444" CONCRETE	444" BRICK	444" METAL	444" SIGN
450" WATER MAIN	450" GAS MAIN	450" ASPHALT	450" CEMENT	450" GRASS	450" CONCRETE	450" BRICK	450" METAL	450" SIGN
456" WATER MAIN	456" GAS MAIN	456" ASPHALT	456" CEMENT	456" GRASS	456" CONCRETE	456" BRICK	456" METAL	456" SIGN
462" WATER MAIN	462" GAS MAIN	462" ASPHALT	462" CEMENT	462" GRASS	462" CONCRETE	462" BRICK	462" METAL	462" SIGN
468" WATER MAIN	468" GAS MAIN	468" ASPHALT	468" CEMENT	468" GRASS	468" CONCRETE	468" BRICK	468" METAL	468" SIGN
474" WATER MAIN	474" GAS MAIN	474" ASPHALT	474" CEMENT	474" GRASS	474" CONCRETE	474" BRICK	474" METAL	474" SIGN
480" WATER MAIN	480" GAS MAIN	480" ASPHALT	480" CEMENT	480" GRASS	480" CONCRETE	480" BRICK	480" METAL	480" SIGN
486" WATER MAIN	486" GAS MAIN	486" ASPHALT	486" CEMENT	486" GRASS	486" CONCRETE	486" BRICK	486" METAL	486" SIGN
492" WATER MAIN	492" GAS MAIN	492" ASPHALT	492" CEMENT	492" GRASS	492" CONCRETE	492" BRICK	492" METAL	492" SIGN
498" WATER MAIN	498" GAS MAIN	498" ASPHALT	498" CEMENT	498" GRASS	498" CONCRETE	498" BRICK	498" METAL	498" SIGN
504" WATER MAIN	504" GAS MAIN	504" ASPHALT	504" CEMENT	504" GRASS	504" CONCRETE	504" BRICK	504" METAL	504" SIGN
510" WATER MAIN	510" GAS MAIN	510" ASPHALT	510" CEMENT	510" GRASS	510" CONCRETE	510" BRICK	510" METAL	510" SIGN
516" WATER MAIN	516" GAS MAIN	516" ASPHALT	516" CEMENT	516" GRASS	516" CONCRETE	516" BRICK	516" METAL	516" SIGN
522" WATER MAIN	522" GAS MAIN	522" ASPHALT	522" CEMENT	522" GRASS	522" CONCRETE	522" BRICK	522" METAL	522" SIGN
528" WATER MAIN	528" GAS MAIN	528" ASPHALT	528" CEMENT	528" GRASS	528" CONCRETE	528" BRICK	528" METAL	528" SIGN
534" WATER MAIN	534" GAS MAIN	534" ASPHALT	534" CEMENT	534" GRASS	534" CONCRETE	534" BRICK	534" METAL	534" SIGN
540" WATER MAIN	540" GAS MAIN	540" ASPHALT	540" CEMENT	540" GRASS	540" CONCRETE	540" BRICK	540" METAL	540" SIGN
546" WATER MAIN	546" GAS MAIN	546" ASPHALT	546" CEMENT	546" GRASS	546" CONCRETE	546" BRICK	546" METAL	546" SIGN
552" WATER MAIN	552" GAS MAIN	552" ASPHALT	552" CEMENT	552" GRASS	552" CONCRETE	552" BRICK	552" METAL	552" SIGN
558" WATER MAIN	558" GAS MAIN	558" ASPHALT	558" CEMENT	558" GRASS	558" CONCRETE	558" BRICK	558" METAL	558" SIGN
564" WATER MAIN	564" GAS MAIN	564" ASPHALT	564" CEMENT	564" GRASS	564" CONCRETE	564" BRICK	564" METAL	564" SIGN
570" WATER MAIN	570" GAS MAIN	570" ASPHALT	570" CEMENT	570" GRASS	570" CONCRETE	570" BRICK	570" METAL	570" SIGN
576" WATER MAIN	576" GAS MAIN	576" ASPHALT	576" CEMENT	576" GRASS	576" CONCRETE	576" BRICK	576" METAL	576" SIGN
582" WATER MAIN	582" GAS MAIN	582" ASPHALT	582" CEMENT	582" GRASS	582" CONCRETE	582" BRICK	582" METAL	582" SIGN
588" WATER MAIN	588" GAS MAIN	588" ASPHALT	588" CEMENT	588" GRASS	588" CONCRETE	588" BRICK	588" METAL	588" SIGN
594" WATER MAIN	594" GAS MAIN	594" ASPHALT	594" CEMENT	594" GRASS	594" CONCRETE	594" BRICK	594" METAL	594" SIGN
600" WATER MAIN	600" GAS MAIN	600" ASPHALT	600" CEMENT	600" GRASS	600" CONCRETE	600" BRICK	600" METAL	600" SIGN
606" WATER MAIN	606" GAS MAIN	606" ASPHALT	606" CEMENT	606" GRASS	606" CONCRETE	606" BRICK	606" METAL	606" SIGN
612" WATER MAIN	612" GAS MAIN	612" ASPHALT	612" CEMENT	612" GRASS	612" CONCRETE	612" BRICK	612" METAL	612" SIGN
618" WATER MAIN	618" GAS MAIN	618" ASPHALT	618" CEMENT	618" GRASS	618" CONCRETE	618" BRICK	618" METAL	618" SIGN
624" WATER MAIN	624" GAS MAIN	624" ASPHALT	624" CEMENT	624" GRASS	624" CONCRETE	624" BRICK	624" METAL	624" SIGN
630" WATER MAIN	630" GAS MAIN	630" ASPHALT	630" CEMENT	630" GRASS	630" CONCRETE	630" BRICK	630" METAL	630" SIGN
636" WATER MAIN	636" GAS MAIN	636" ASPHALT	636" CEMENT	636" GRASS	636" CONCRETE	636" BRICK	636" METAL	636" SIGN
642" WATER MAIN	642" GAS MAIN	642" ASPHALT	642" CEMENT	642" GRASS	642" CONCRETE	642" BRICK	642" METAL	642" SIGN
648" WATER MAIN	648" GAS MAIN	648" ASPHALT	648" CEMENT	648" GRASS	648" CONCRETE	648" BRICK	648" METAL	648" SIGN
654" WATER MAIN	654" GAS MAIN	654" ASPHALT	654" CEMENT	654" GRASS	654" CONCRETE	654" BRICK		

TOPOGRAPHIC SURVEY
FOR
PEACHTREE INDUSTRIAL BLVD.
(5880 PEACHTREE INDUSTRIAL BLVD.)
LOCATED IN
DEKALB COUNTY, GEORGIA

Station	From	To	Distance
1+00	1+00	1+00	0.00
1+01	1+00	1+01	1.00
1+02	1+00	1+02	2.00
1+03	1+00	1+03	3.00
1+04	1+00	1+04	4.00
1+05	1+00	1+05	5.00
1+06	1+00	1+06	6.00
1+07	1+00	1+07	7.00
1+08	1+00	1+08	8.00
1+09	1+00	1+09	9.00
1+10	1+00	1+10	10.00
1+11	1+00	1+11	11.00
1+12	1+00	1+12	12.00
1+13	1+00	1+13	13.00
1+14	1+00	1+14	14.00
1+15	1+00	1+15	15.00
1+16	1+00	1+16	16.00
1+17	1+00	1+17	17.00
1+18	1+00	1+18	18.00
1+19	1+00	1+19	19.00
1+20	1+00	1+20	20.00

TerraMark
LAND SURVEYING & ENGINEERING, INC.
1000 Peachtree Industrial Blvd., Suite 100
Atlanta, Georgia 30308
Phone: (404) 525-1000
Fax: (404) 525-1001
www.terramark.com

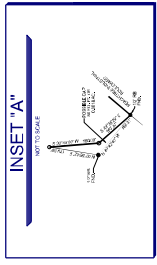


ABBREVIATIONS

AC	Asphalt Concrete
AD	Asphalt Driveway
AE	Asphalt Easement
AF	Asphalt Footing
AG	Asphalt Gravel
AH	Asphalt Haul
AI	Asphalt Inlet
AL	Asphalt Lining
AM	Asphalt Mill
AN	Asphalt Noise
AO	Asphalt Overlay
AP	Asphalt Paving
AR	Asphalt Repair
AS	Asphalt Surface
AT	Asphalt Treatment
AV	Asphalt Veneer
AW	Asphalt Water
AX	Asphalt Wax
AY	Asphalt Yield
AZ	Asphalt Zone

TREE LEGEND (ABBREVIATIONS)

AC	Asphalt Concrete
AD	Asphalt Driveway
AE	Asphalt Easement
AF	Asphalt Footing
AG	Asphalt Gravel
AH	Asphalt Haul
AI	Asphalt Inlet
AL	Asphalt Lining
AM	Asphalt Mill
AN	Asphalt Noise
AO	Asphalt Overlay
AP	Asphalt Paving
AR	Asphalt Repair
AS	Asphalt Surface
AT	Asphalt Treatment
AV	Asphalt Veneer
AW	Asphalt Water
AX	Asphalt Wax
AY	Asphalt Yield
AZ	Asphalt Zone



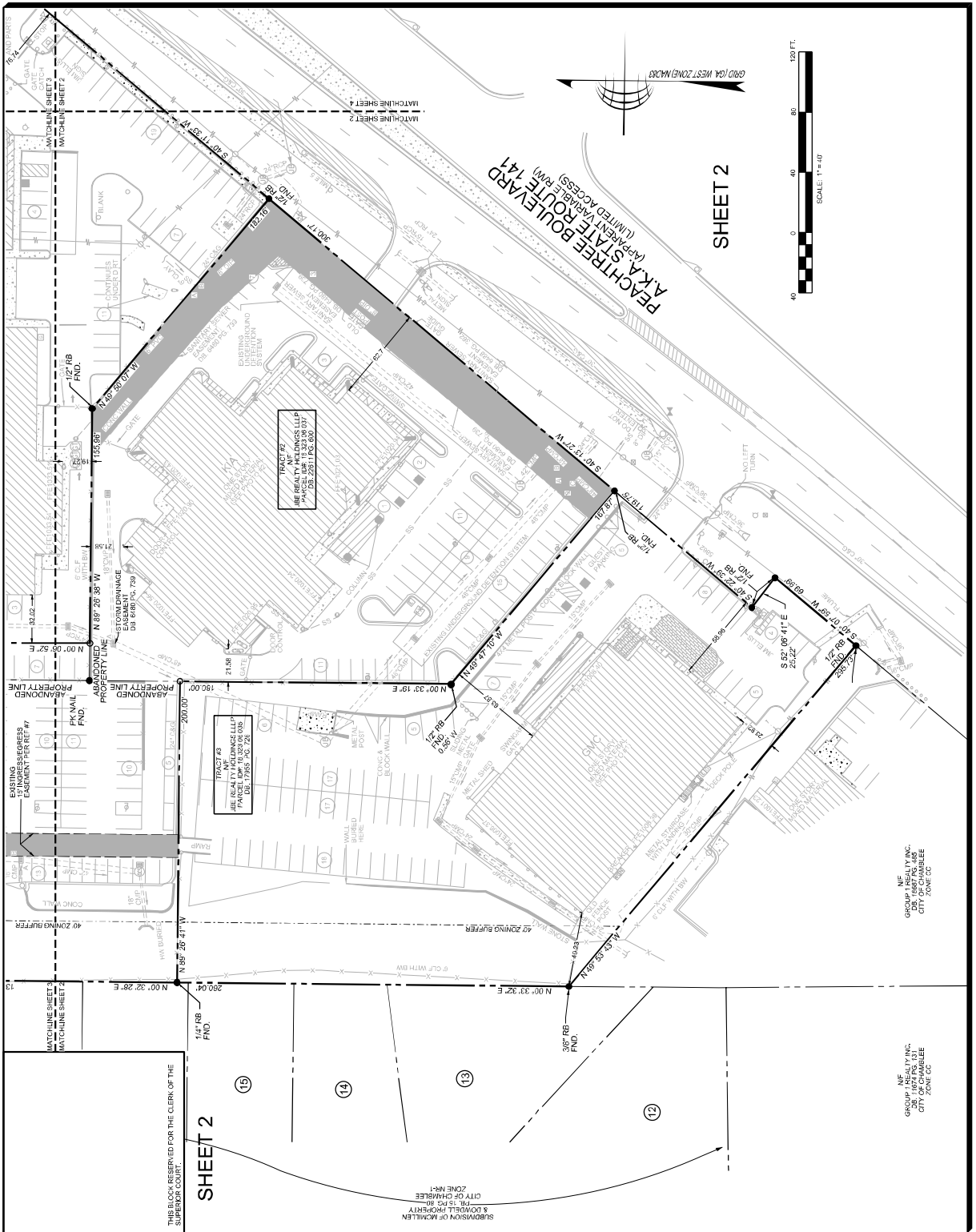
LEGEND

AC	Asphalt Concrete
AD	Asphalt Driveway
AE	Asphalt Easement
AF	Asphalt Footing
AG	Asphalt Gravel
AH	Asphalt Haul
AI	Asphalt Inlet
AL	Asphalt Lining
AM	Asphalt Mill
AN	Asphalt Noise
AO	Asphalt Overlay
AP	Asphalt Paving
AR	Asphalt Repair
AS	Asphalt Surface
AT	Asphalt Treatment
AV	Asphalt Veneer
AW	Asphalt Water
AX	Asphalt Wax
AY	Asphalt Yield
AZ	Asphalt Zone

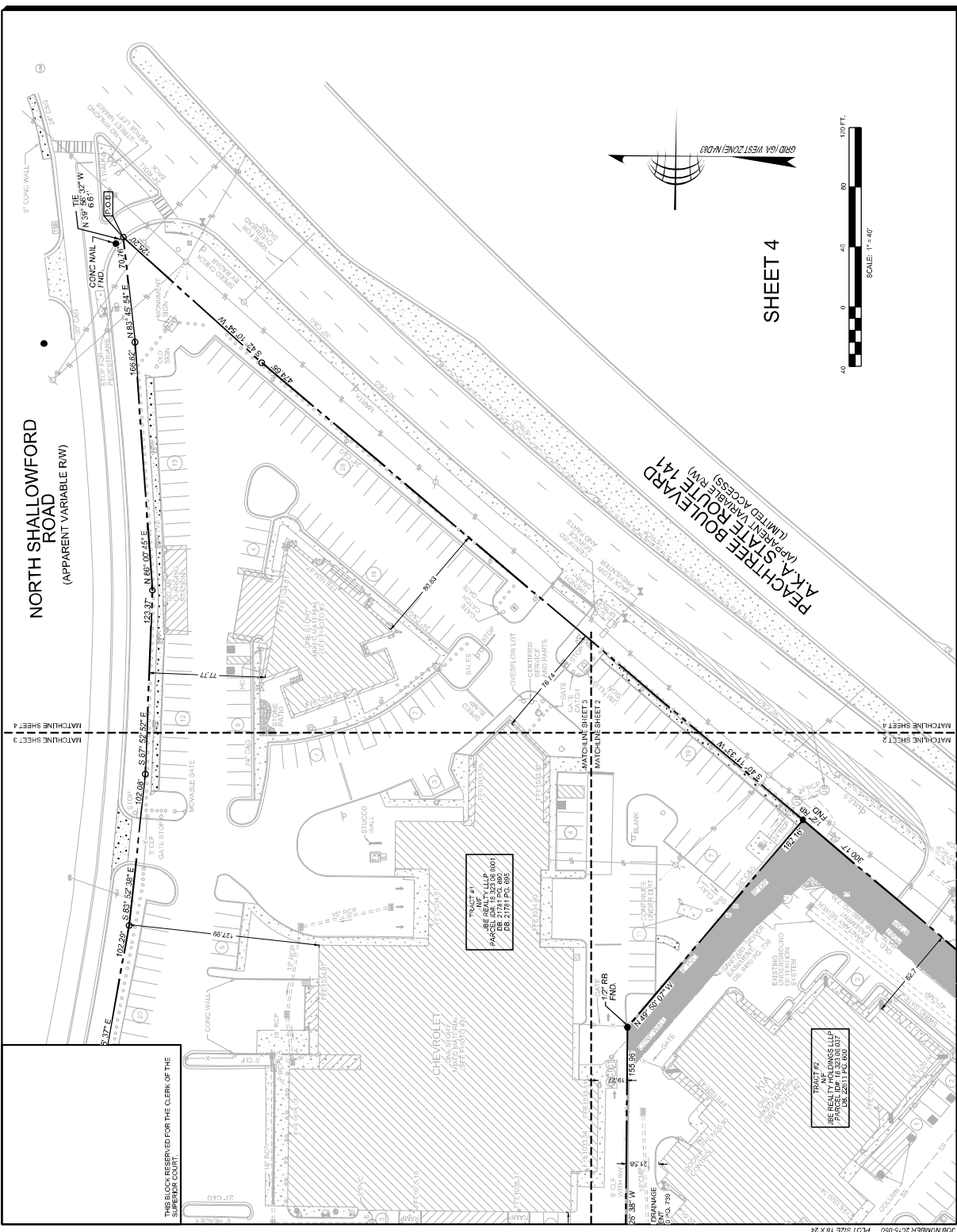
RECOMBINATION PLAT
FOR
JBE REALTY HOLDINGS LLLP
(5880 PEACHTREE INDUSTRIAL BLVD)
LOCATED IN
LAND LOT 323, 18TH DISTRICT
CITY OF CHAMBLEE, DEKALB COUNTY, GEORGIA

Project No.	2015-000	No.	Revision	Drawn	17/08/2018
Survey Cont.	JK. NOL 201	AT	ADDRESS OF CIVIL CODED COORDINATE COMMISSIONS		17/08/2018
Survey Bgt.	TR	AT			
Approved By:	DEP	RS			
Date:	04/08/2018	RS			
Scale:	1:500	RS			
0-5 METERS SCALE AND 0-5 METERS SCALE 0-5 METERS SCALE AND 0-5 METERS SCALE					

TerraMark
Professional Land Surveying, Inc.
1306 East Fenty Road
Baltimore, Maryland 21206
Phone No. (770) 421-3227
Fax No. (770) 421-0532
www.terraMark.com
C.O.#LS7000016



JOB NUMBER 2015-050 PLOT SIZE 10 X 24



Professional Land Surveying, Inc.
1348 Lake Park Road
Atlanta, Georgia 30306
Phone No. (770) 471-1327
Fax No. (770) 471-0522
www.kbradford.com
C.A.S. 151000016

TerraMark

FOR THE RECOMBINATION PLAT
OF LAND LOT 323.18TH DISTRICT
CITY OF CHAMBLEE, DEKALB COUNTY, GEORGIA

Project No.	2015-005
Owner	JBE REALTY HOLDINGS LLP
Survey Date	08/08/2015
Survey By	JL & JH
Checked By	JL & JH
Approved By	JL & JH
Scale	1" = 40'
Sheet	4 of 4

RECOMBINATION PLAT
FOR
JBE REALTY HOLDINGS LLP
(5880 PEACHTREE INDUSTRIAL BLVD)
LOCATED IN
LAND LOT 323.18TH DISTRICT
CITY OF CHAMBLEE, DEKALB COUNTY, GEORGIA

SHEET NO. **4**
4

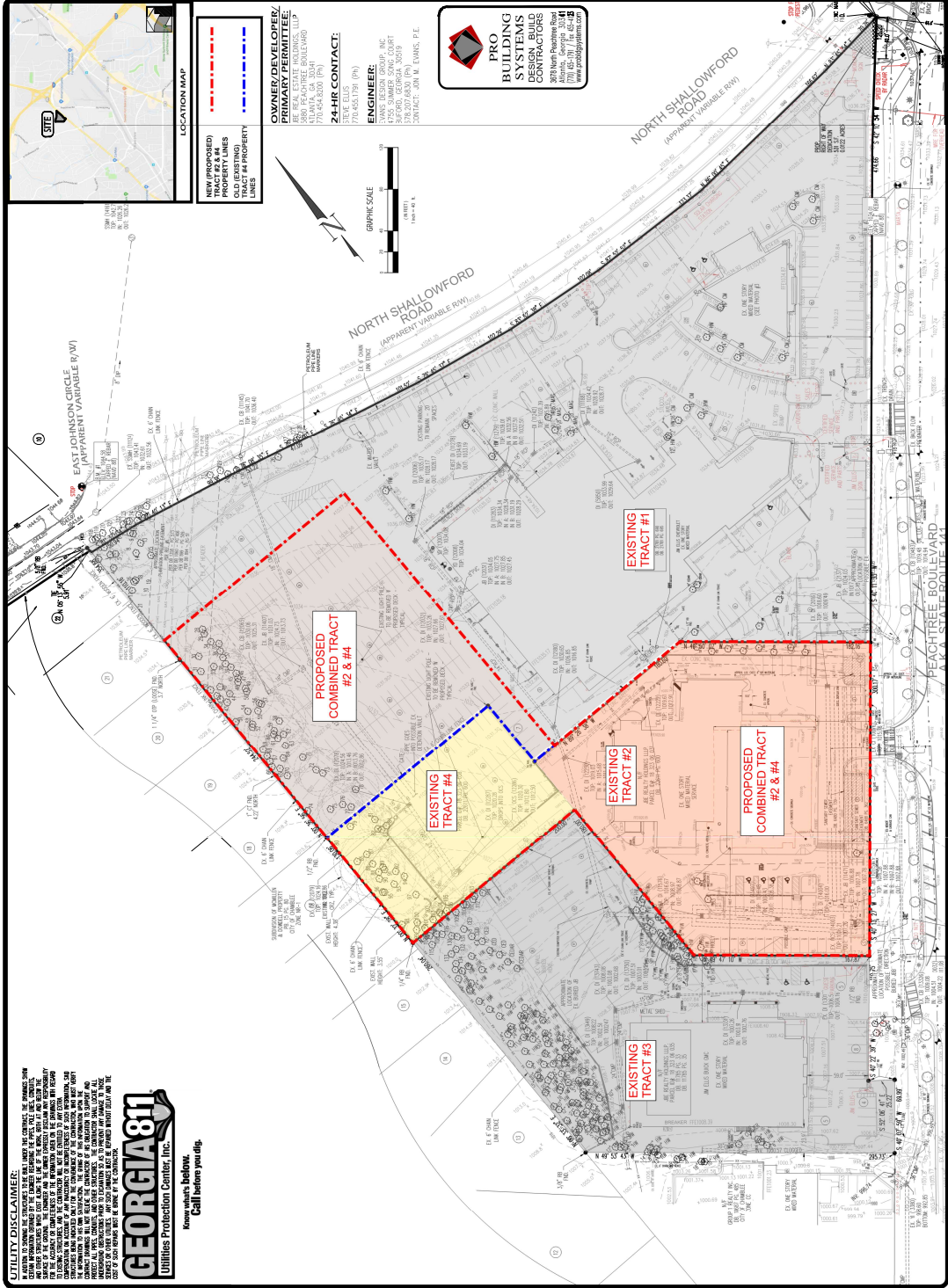
SCALE: 1" = 40'

120 FT.
80
40
0

UTILITY DISCLAIMER:
GEOGRAPHIC INFORMATION SYSTEMS (GIS) DATA IS PROVIDED TO THE CLIENT FOR INFORMATIONAL PURPOSES ONLY. THE DATA IS NOT GUARANTEED TO BE ACCURATE, COMPLETE, OR UP-TO-DATE. THE CLIENT IS RESPONSIBLE FOR VERIFYING THE DATA AND FOR OBTAINING ANY NECESSARY PERMITS OR APPROVALS FROM THE APPROPRIATE AGENCIES. THE DATA IS NOT TO BE USED FOR ANY PURPOSES OTHER THAN INFORMATIONAL. THE CLIENT IS RESPONSIBLE FOR OBTAINING ANY NECESSARY PERMITS OR APPROVALS FROM THE APPROPRIATE AGENCIES. THE DATA IS NOT TO BE USED FOR ANY PURPOSES OTHER THAN INFORMATIONAL.



Know what's below.
Call before you dig.



Engineering Group, Inc.
Civil Engineering
Site Planning
Land Development
Surveying
4335 Summer Court
Atlanta, GA 30326
Phone: 404.297.8300
Fax: 404.297.8301
www.engrgr.com

PROBUD
Professional Building Design
100 Peachtree Street, NE
Atlanta, GA 30309
Phone: 404.525.1100
Fax: 404.525.1101
www.probud.com

PROJECT NAME:
JIM ELLIS
CADILLAC
PARKING
STRUCTURE

OWNER/DEVELOPER/
PRIMARY PERMITTEE:
JIM ELLIS
100 PEACHTREE BLVD
ATLANTA, GA 30309
PHONE: 404.525.1100
FAX: 404.525.1101
WWW.PROBUD.COM

24-HR CONTACT:
JIM ELLIS
770.655.7199 (PH)
770.655.7199 (FAX)

ENGINEER:
PROBUD
100 PEACHTREE BLVD
ATLANTA, GA 30309
PHONE: 404.525.1100
FAX: 404.525.1101
WWW.PROBUD.COM

DATE:
01-02-25

OWNER DEVELOPER:
JIM ELLIS

REVISIONS:

REVISIONS:

REVISIONS:

REVISIONS:

REVISIONS:

REVISIONS:

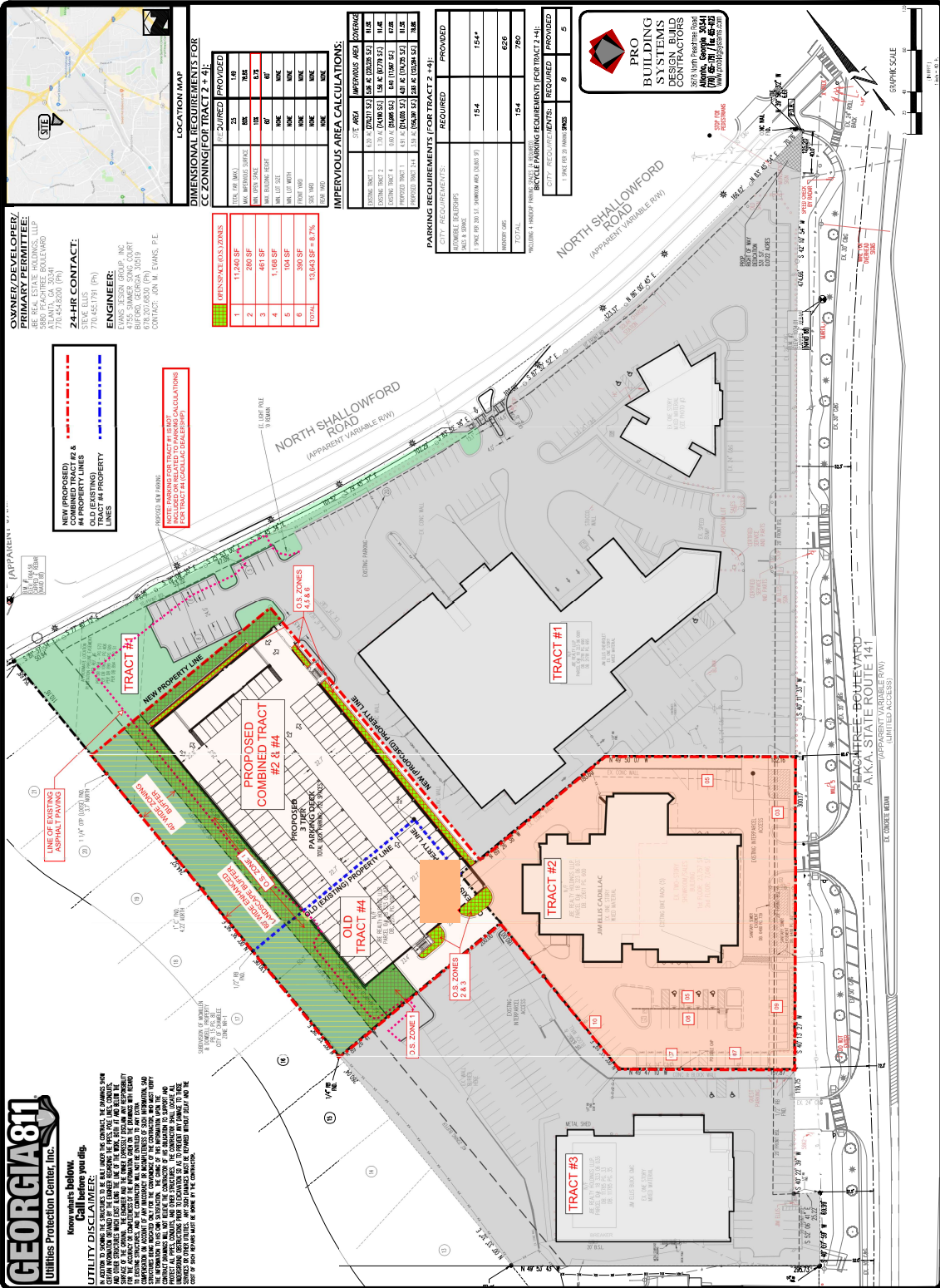
REVISIONS:

REVISIONS:

REVISIONS:



UTILITY DISCLAIMER:
Call before you dig.
THE INFORMATION PROVIDED BY THE UTILITY LOCATOR SERVICE IS FOR INFORMATIONAL PURPOSES ONLY. IT IS NOT A GUARANTEE OF THE LOCATION, DEPTH, OR TYPE OF UTILITIES. THE UTILITY LOCATOR SERVICE IS NOT RESPONSIBLE FOR ANY DAMAGE TO PERSONS OR PROPERTY, OR FOR ANY LOSS OF PROFITS OR BUSINESS, ARISING OUT OF THE USE OF THE INFORMATION PROVIDED BY THE UTILITY LOCATOR SERVICE. THE UTILITY LOCATOR SERVICE IS NOT A SUBSTITUTE FOR A PROFESSIONAL ENGINEER'S DESIGN OR FOR A PROFESSIONAL ENGINEER'S SUPERVISION OF THE CONSTRUCTION OF THE PROJECT. THE UTILITY LOCATOR SERVICE IS NOT A SUBSTITUTE FOR A PROFESSIONAL ENGINEER'S DESIGN OR FOR A PROFESSIONAL ENGINEER'S SUPERVISION OF THE CONSTRUCTION OF THE PROJECT. THE UTILITY LOCATOR SERVICE IS NOT A SUBSTITUTE FOR A PROFESSIONAL ENGINEER'S DESIGN OR FOR A PROFESSIONAL ENGINEER'S SUPERVISION OF THE CONSTRUCTION OF THE PROJECT.



OWNER/DEVELOPER/PRIMARY PERMITTEE: EVANS DESIGN GROUP, INC. 5880 PEACHTREE BOULEVARD SUITE 100 ATLANTA, GA 30328 770.451.7191 (P) 770.451.7192 (F) WWW.EVANSDESIGN.COM	
24-HR CONTACT: STEVE ELLIS 770.451.7191 (P) 770.451.7192 (F)	
ENGINEER: EVANS DESIGN GROUP, INC. 5880 PEACHTREE BOULEVARD SUITE 100 ATLANTA, GA 30328 770.451.7191 (P) 770.451.7192 (F) WWW.EVANSDESIGN.COM	
PROJECT NAME: JIM ELLIS CADILLAC PARKING STRUCTURE	
LOCATION MAP: L-323, 18TH DISTRICT CITY OF ATLANTA GEORGIA	
DATE: 01-02-25	
DESIGNED BY: JIM ELLIS	
CHECKED BY: JIM ELLIS	
APPROVED BY: JIM ELLIS	
OWNER/DEVELOPER: JIM ELLIS	
REVISIONS:	
18-011	
SITE PLAN	
C-5	

