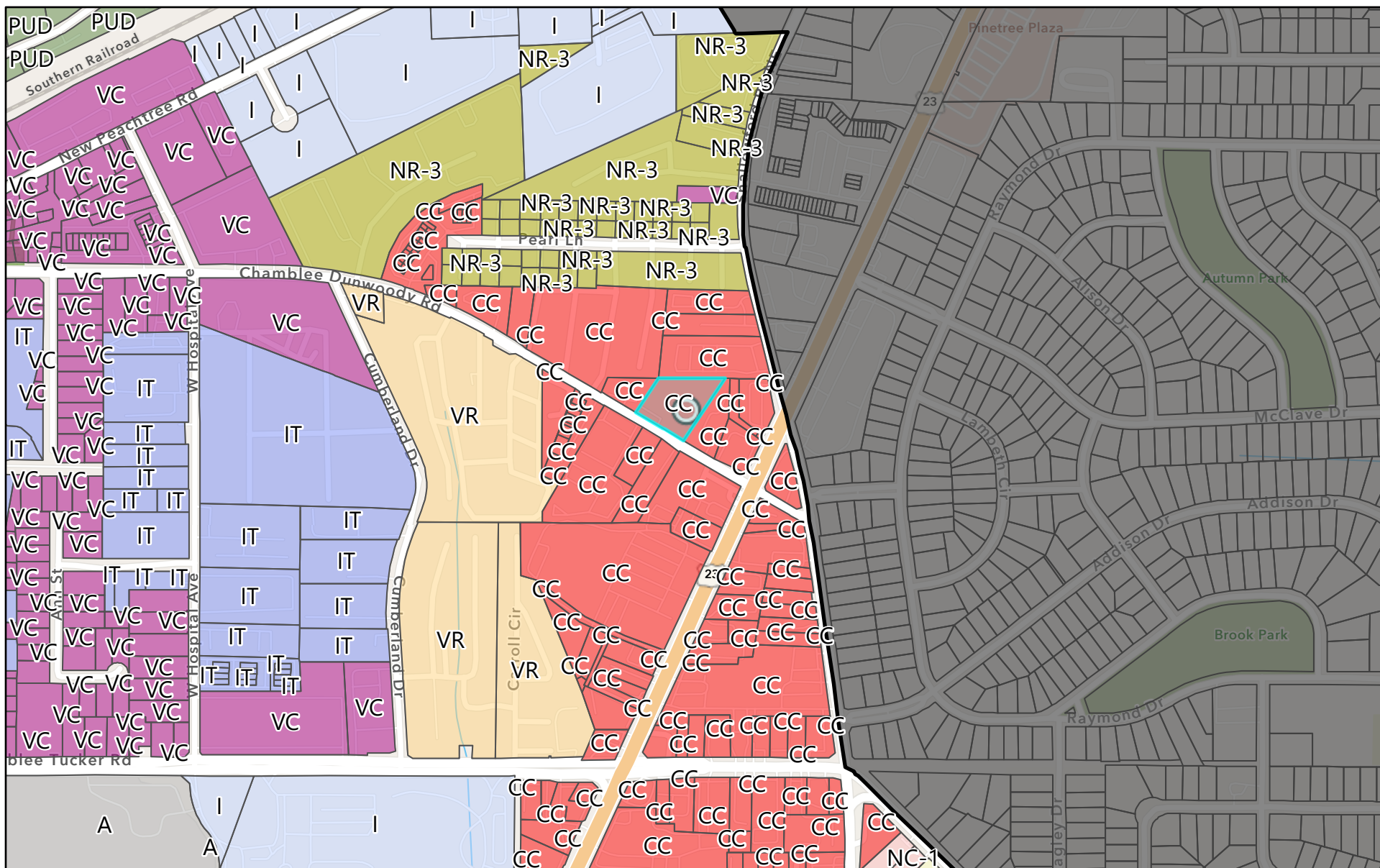
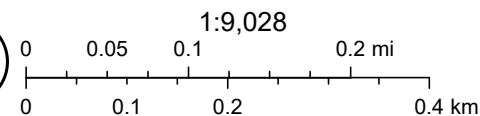


3127 Chamblee Dunwoody Rd - Zoning Map



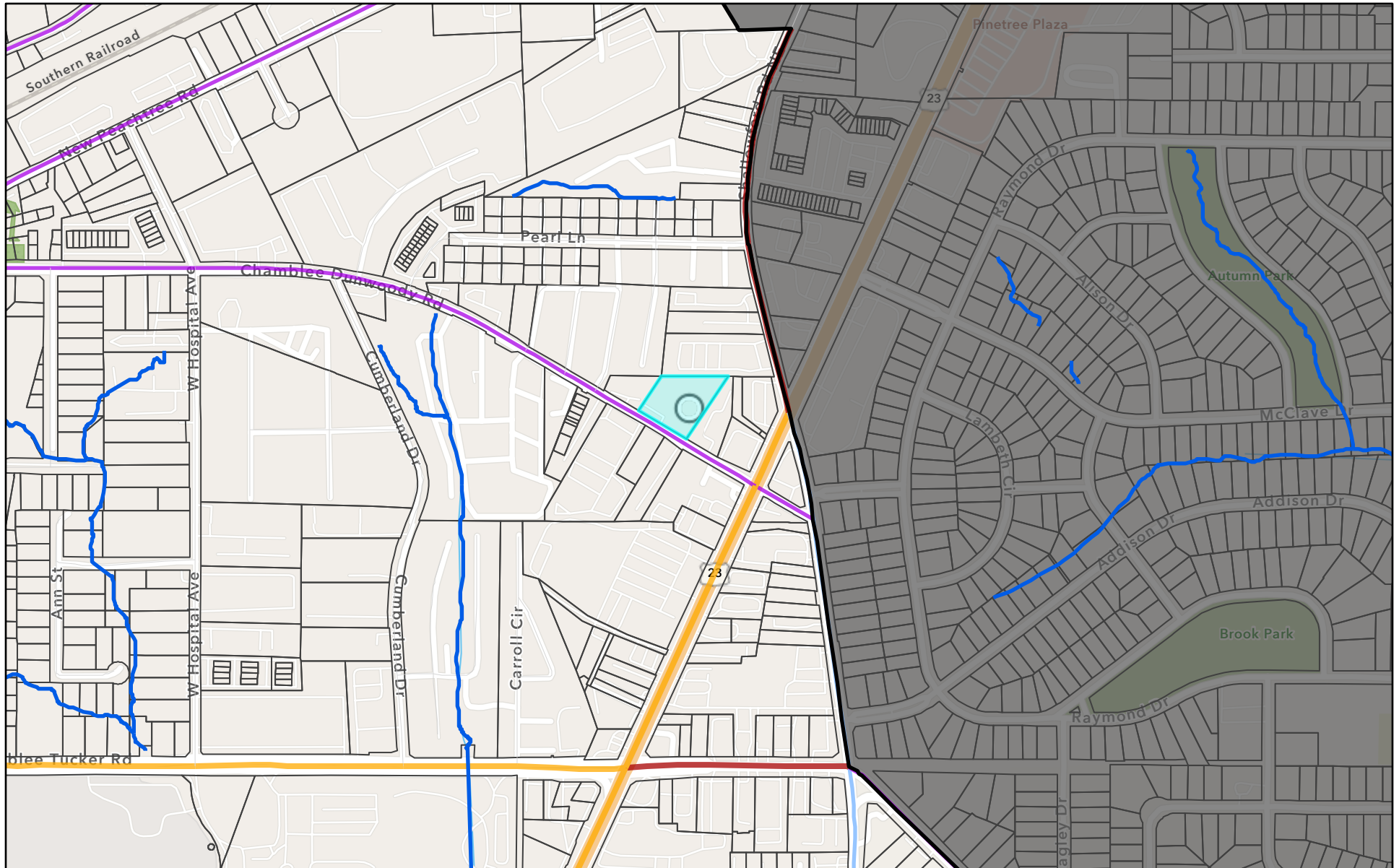
5/22/2025, 5:19:21 PM

- | | | |
|---------------------|-------------------------------------|---------------------------|
| City Limits | Industrial Transitional | Planned Unit Development |
| Tax Parcel Zoning | Low-Density Neighborhood Commercial | Village Commercial |
| Airport | Neighborhood Residential 1 | Village Residential |
| Corridor Commercial | Neighborhood Infill | DeKalb County Tax Parcels |
| Light Industrial | | |

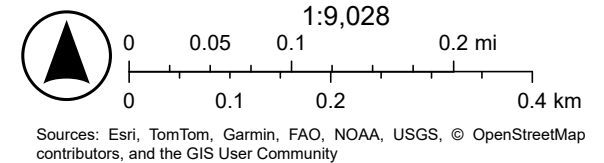
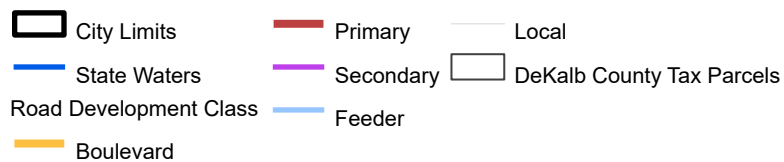


Sources: Esri, TomTom, Garmin, FAO, NOAA, USGS, © OpenStreetMap contributors, and the GIS User Community

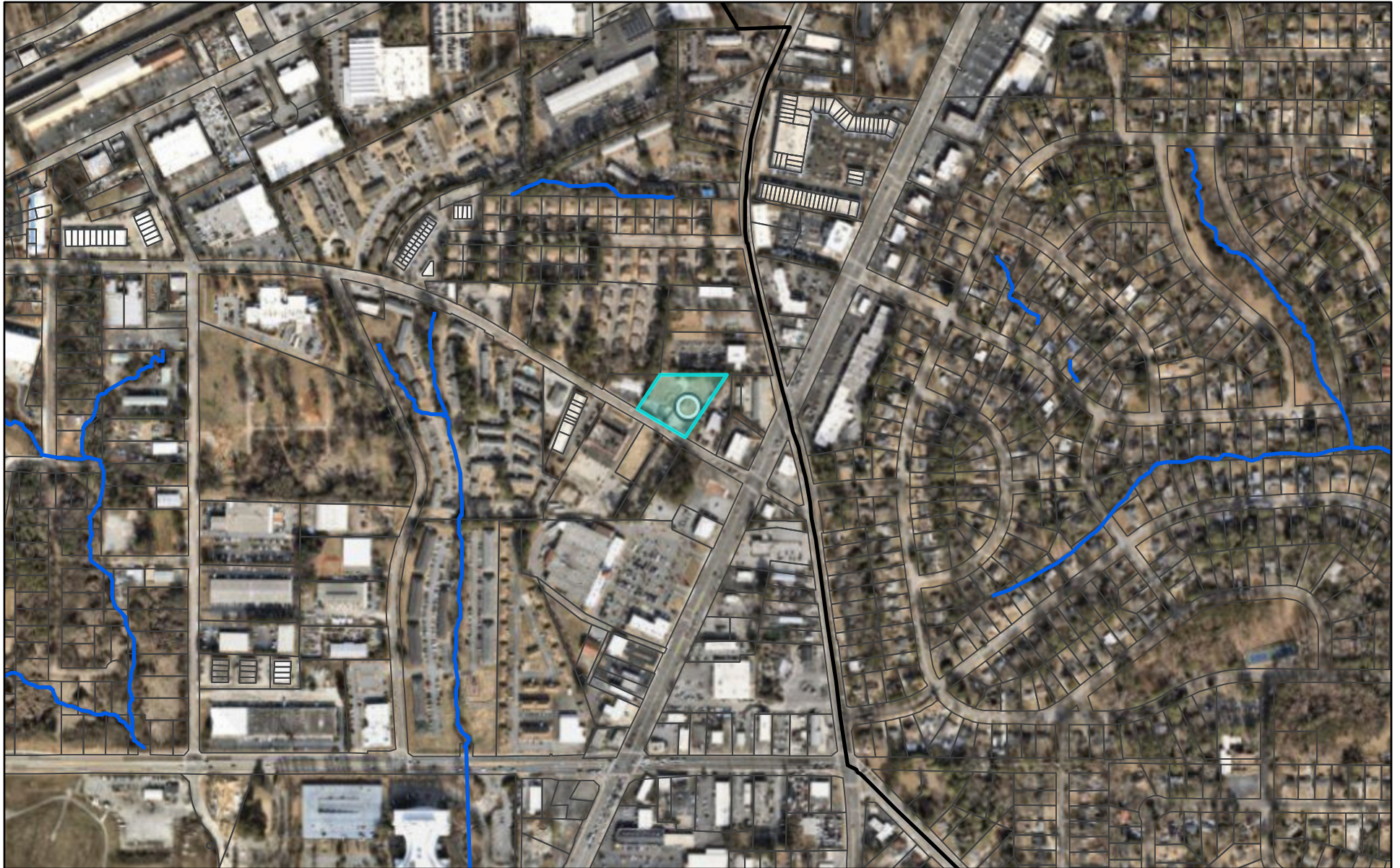
3127 Chamblee Dunwoody Rd - Location Map



5/22/2025, 5:22:32 PM



3127 Chamblee Dunwoody Rd - Aerial Map



5/22/2025, 5:23:46 PM

 City Limits  DeKalb County Tax Parcels
 State Waters

