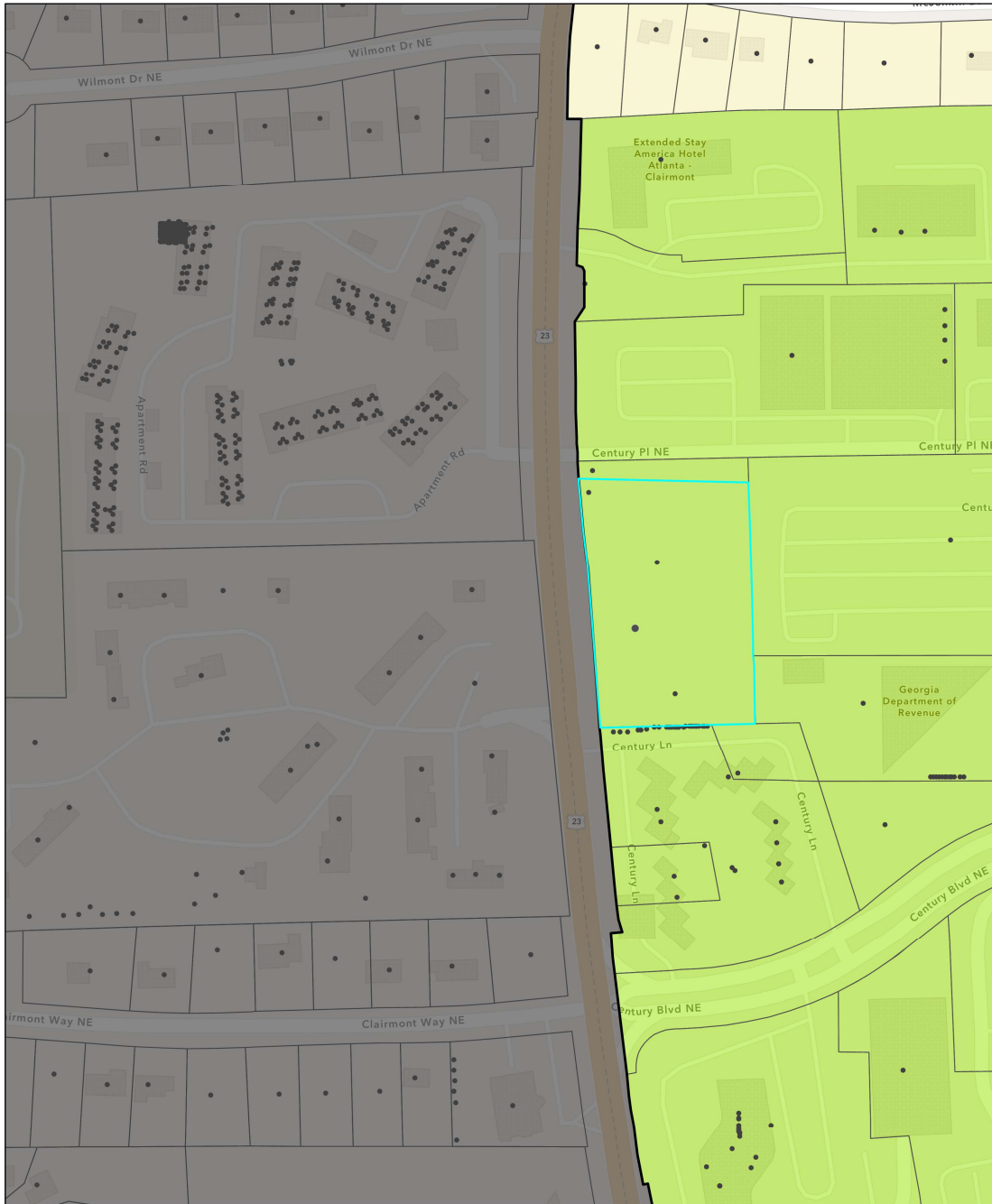


# 3063 Clairmont Rd - Zoning Map



1/27/2025, 4:22:09 PM

City Limits

• Address

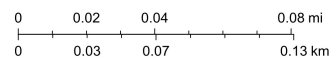
Tax Parcel Zoning

Mixed Use - Business Center

Neighborhood Residential 1

DeKalb County Tax Parcels

1:2,257



Esri Community Maps Contributors, City of Atlanta, © OpenStreetMap, Microsoft, Esri, TomTom, Garmin, SafeGraph, GeoTechnologies, Inc, METI/NASA, USGS, EPA, NPS, US Census Bureau, USDA, USFWS

Web AppBuilder for ArcGIS

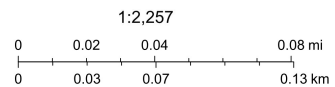
Esri Community Maps Contributors, City of Atlanta, © OpenStreetMap, Microsoft, Esri, TomTom, Garmin, SafeGraph, GeoTechnologies, Inc, METI/NASA, USGS, EPA, NPS, US Census Bureau, USDA, USFWS |

# 3063 Clairmont Rd - Location Map



1/27/2025, 4:23:32 PM

- |                       |                               |
|-----------------------|-------------------------------|
| City Limits           | <b>Road Development Class</b> |
| Address               | Boulevard                     |
| DeKalb County Streams | Local                         |
|                       | DeKalb County Tax Parcels     |



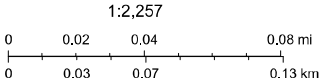
Esri Community Maps Contributors, City of Atlanta, © OpenStreetMap, Microsoft, Esri, TomTom, Garmin, SafeGraph, GeoTechnologies, Inc, METI/NASA, USGS, EPA, NPS, US Census Bureau, USDA, USFWS

3063 Clairmont Rd - Aerial Map



1/27/2025, 4:17:54 PM

- City Limits
- Address
- DeKalb County Tax Parcels



Esri Community Maps Contributors, City of Atlanta, © OpenStreetMap, Microsoft, Esri, TomTom, Garmin, SafeGraph, GeoTechnologies, Inc, METI/NASA, USGS, EPA, NPS, US Census Bureau, USDA, USFWS