



--	--

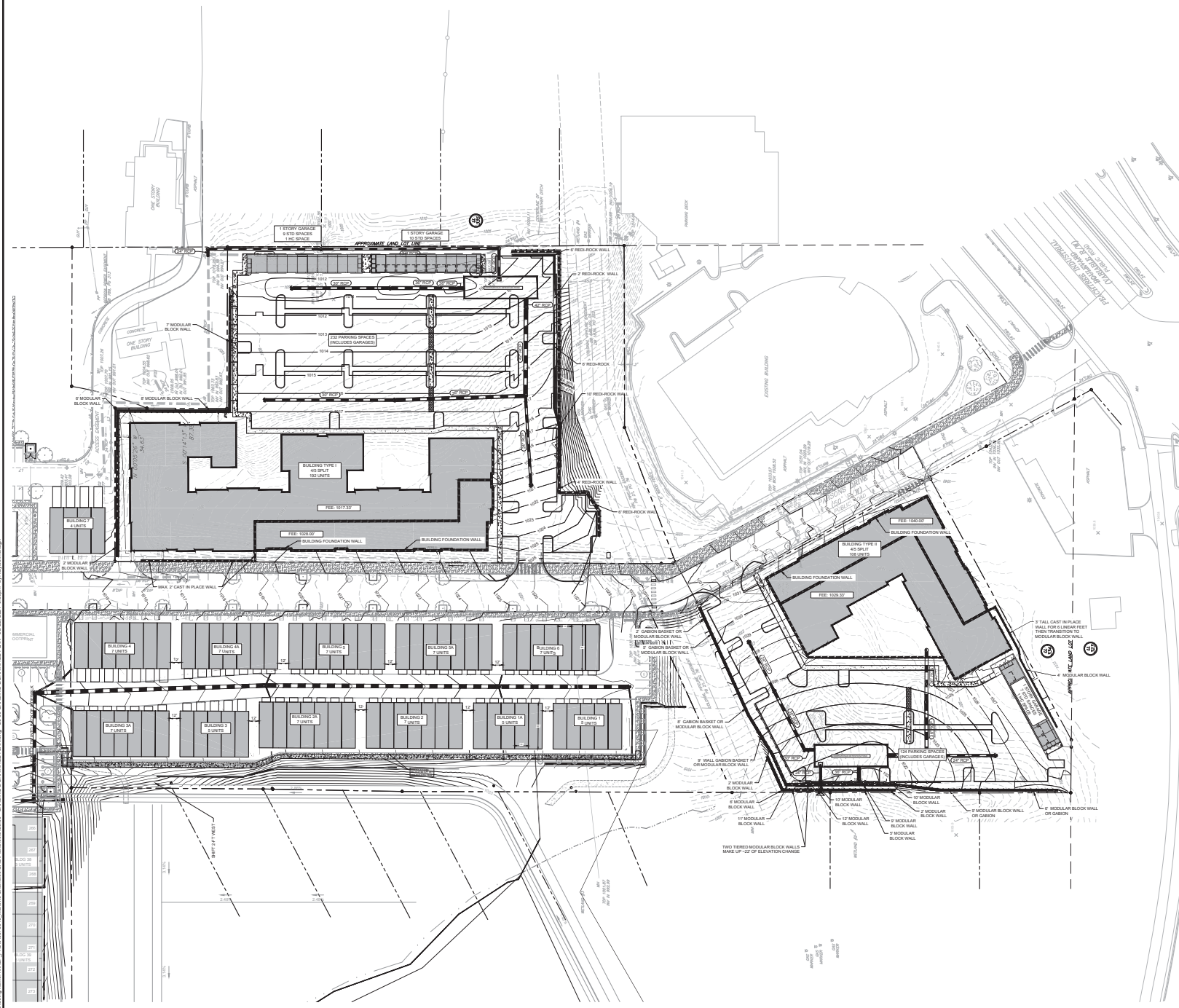
PRELIMINARY: NOT FOR CONSTRUCTION

Kimley»Horn
©2010 KIMLEY-HORN AND ASSOCIATES, INC.
11720 AMBER PARK DRIVE, SUITE 600
ALPHARETTA, GEORGIA 30009
PHONE (770) 619-4280
WWW.KIMLEY-HORN.COM

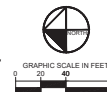
[illegible]

PROJECT	
GRWCC CERT. (LEVEL II)	
DRAWN BY	GMC
DESIGNED BY	KDM
REVIEWED BY	JRM
DATE	06/27/2024
PROJECT NO.	01-6643007
TITLE	GRADING & DRAINAGE PLAN
SHEET NUMBER	C3.00

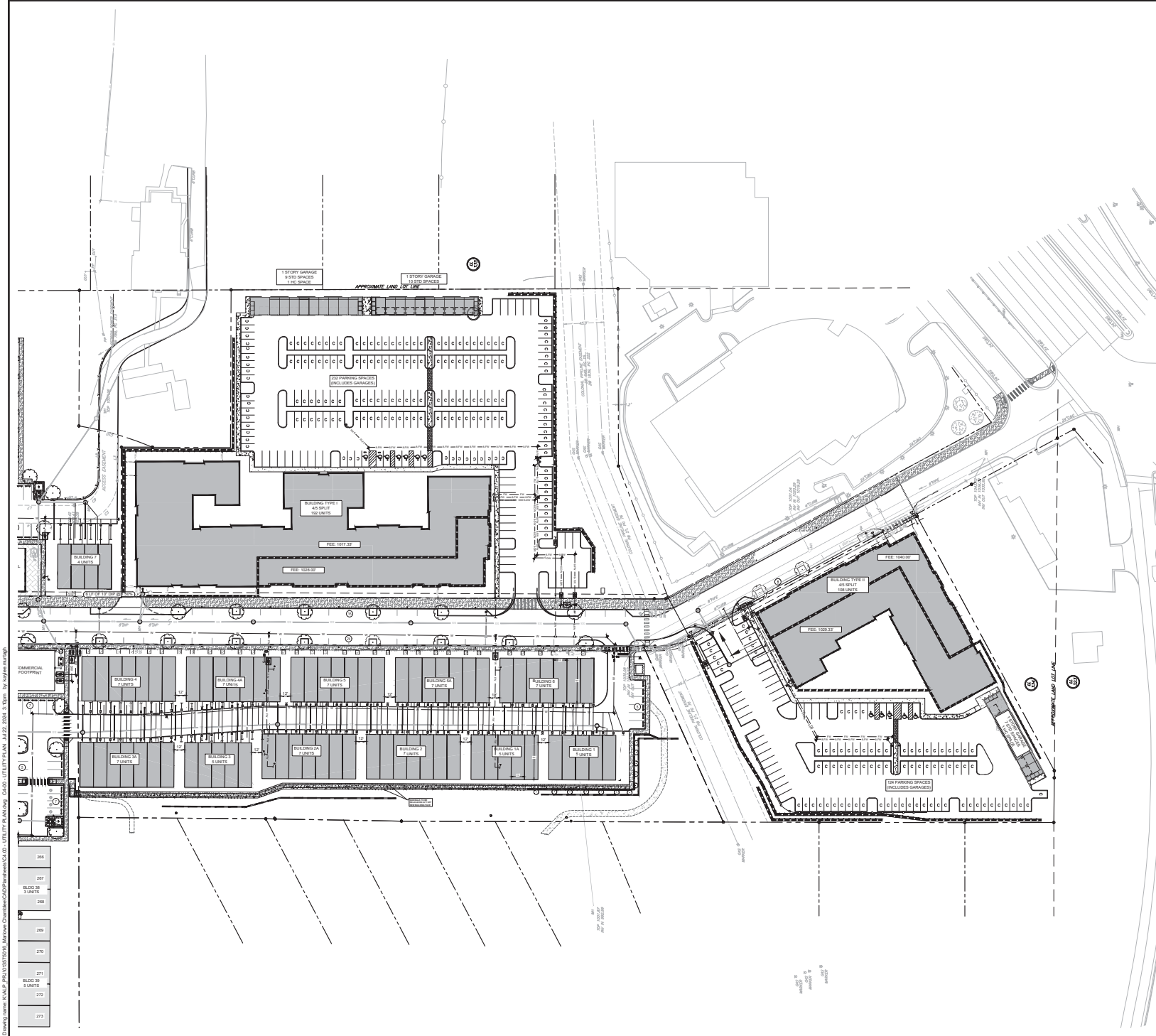
PRELIMINARY: NOT FOR CONSTRUCTION



GEORGIA8th



Drawing name: C:\P\101072018\101072018.dwg, Date: 06/27/2024, 3:10pm, by: jh101072018



UTILITY NOTES:

- ALL SANITARY SEWER CLEANOUTS IN PAVED AREAS SHALL HAVE A BRASS CAP SET FLUSH WITH THE PROPOSED GRADE.
- CONTRACTOR SHALL COORDINATE UTILITY CONNECTION AND ROUTING LOCATIONS WITH APPLICABLE AGENCIES.
- ALL UTILITIES SHALL BE CONSTRUCTED IN ACCORDANCE WITH SEWER AUTHORITY SANITARY SEWER AND WATER AUTHORITY WATER STANDARDS AND SPECIFICATIONS.
- ALL PIPE LENGTHS SPECIFIED IN THESE PLANS ARE THE HORIZONTAL DISTANCE AND ARE SHOWN FOR REFERENCE ONLY. IT IS THE RESPONSIBILITY OF THE CONTRACTOR TO DETERMINE ACTUAL LENGTHS BASED ON PROPOSED PIPE SLOPE. PIPE LENGTHS IN PLANS ARE MEASURED FROM CENTER OF STRUCTURE TO CENTER OF STRUCTURE UNLESS OTHERWISE NOTED.
- UTILITIES MAY EXIST WHICH ARE NOT SHOWN ON THE PLANS. THE CONTRACTOR SHALL BE RESPONSIBLE FOR CONTACTING ALL UTILITY COMPANIES HAVING UTILITIES WITHIN OR ADJACENT TO THE WORK AREA. THE CONTRACTOR SHALL HAVE THE UTILITIES FIELD LOCATED AND COORDINATE WITH THE UTILITY COMPANIES TO HAVE CONFLICTS RELOCATED WHEN NECESSARY OR ADAPTED FOR TIE-INS.
- ALL UTILITY CONNECTIONS END AT 5' OUTSIDE OF THE BUILDING FOOTPRINT. REFER TO ARCHITECTURAL, MECHANICAL, ELECTRICAL, AND PLUMBING PLANS FOR BUILDING LAYOUT AND INTERNAL UTILITY SERVICE.
- ALL ON-SITE UTILITIES SHALL BE LOCATED UNDERGROUND.
- CONTRACTOR TO FIELD VERIFY EXISTING INVERT FOR SANITARY SEWER SERVICE CONNECTIONS PRIOR TO CONSTRUCTION. CONTRACTOR SHALL NOTIFY ENGINEER OF DISCREPANCY PRIOR TO PROCEEDING.

UTILITY LEGEND:

— W —	PROPOSED WATER LINE
— E —	PROPOSED ELECTRIC LINE
— T —	PROPOSED TELEPHONE LINE
— G —	PROPOSED NATURAL GAS LINE
— S —	PROPOSED SANITARY SEWER PIPE
— C —	PROPOSED SANITARY SEWER CLEANOUT
— M —	SANITARY SEWER MANHOLE
— V —	WATER VALVE
— F —	FIRE DEPARTMENT CONNECTION (FDC)
— W —	FIRE WYHOUST
— P —	POST INDICATOR VALVE (PIV)
— T —	WATER MAIN TAPPING SLEEVE
— B —	WATER CONNECTIONS AND BENDS

NOTE:

UTILITIES ARE SUBJECT TO CHANGE. THE UTILITIES ARE SUBJECT TO THE APPROVAL OF CITY AND UTILITY PROVIDERS.

GEORGIA811
Call Before You Dig
1-800-4-A-GEORGIA
www.georgia811.com

GRAPHIC SCALE IN FEET
0 20 40 80

DRH KIMBERLY ROAD
KIMBERLY ROAD
LAND LOT 16, LEFT DISTRICT

UTILITY PLAN
C4.00

Kimley»Horn
KIMLEY-HORN & ASSOCIATES, INC.
1110 N. WILSON AVENUE, SUITE 100
ALPHARETTA, GEORGIA 30009
PHONE (770) 614-2200
WWW.KIMLEY-HORN.COM

D.R. HORTON
8800 KENNESAW ROAD, BLDG. B, SUITE 100
KIMBERLY ROAD
LAND LOT 16, LEFT DISTRICT
PHONE 478-771-0829

DRH KIMBERLY ROAD
KIMBERLY ROAD
LAND LOT 16, LEFT DISTRICT

UTILITY PLAN
C4.00





CHAMBLEE APARTMENTS

CHAMBLEE, GA - GREYSTAR

MECKS PARTNERS
 15000 Memorial Drive
 Suite 100
 Houston, Texas 77079
 281.558.8787

07.14.2024
A-00
 JOB NO. 24022

ELEVATION KEYNOTE LEGEND:

1	BRICK VENEER
2A	FIBER CEMENT LAP SIDING
2B	FIBER CEMENT PANEL SYSTEM
3	ASPHALT SHINGLE ROOF
4	42" HEIGHT METAL GUARDRAIL SYSTEM
5	METAL AWNING



BUILDING II - FRONT
1/16"=1'-0"

MATERIAL PERCENTAGES:	
100	BRICK VENEER
0%	FIBER CEMENT LAP SIDING
0%	FIBER CEMENT PANEL SYSTEM



BUILDING I - FRONT
1/16"=1'-0"

MATERIAL PERCENTAGES:	
100	BRICK VENEER
0%	FIBER CEMENT LAP SIDING
0%	FIBER CEMENT PANEL SYSTEM

PRELIMINARY BUILDING ELEVATIONS - CHAMBLEE APARTMENTS

CHAMBLEE, GA - GREYSTAR

MECKS PARTNERS

19000 Memorial Drive
Suite 100
Houston, Texas 77079
281.658.8797

07.14.2024

A-06

JOB NO. 24022