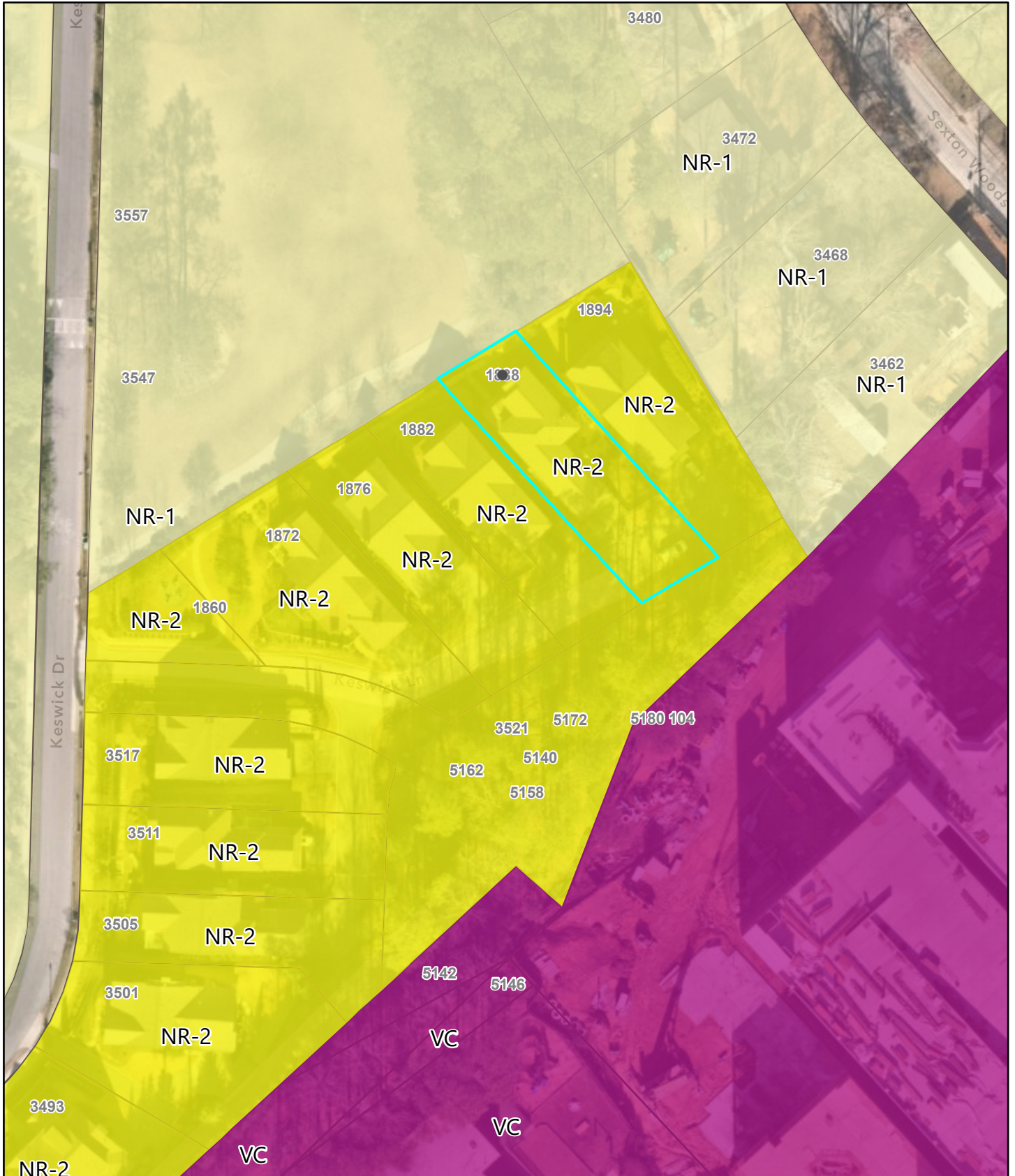
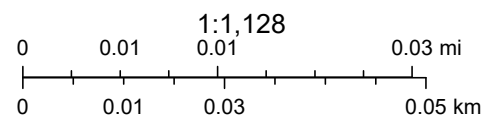


# Zoning Map - 1888 Keswick Ln



6/6/2024, 4:03:39 PM

-  Chamblee City Limits
-  Neighborhood Residential 2
-  Village Commercial
-  Neighborhood Residential 1
-  DeKalb County Tax Parcels





Nearmap, Esri Community Maps Contributors, © OpenStreetMap, Microsoft, Esri, TomTom, Garmin, SafeGraph, GeoTechnologies, Inc, METI/NASA, USGS, EPA, NPS, US Census Bureau, USDA, USFWS

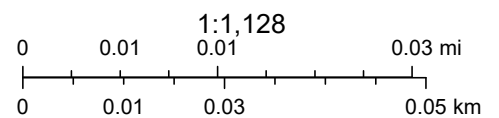
Web AppBuilder for ArcGIS  
Esri, TomTom, Garmin, FAO, NOAA, USGS, EPA, NPS, USFWS | Nearmap |

# Location Map - 1888 Keswick Ln



6/6/2024, 4:09:22 PM

-  Chamblee City Limits
-  DeKalb County Tax Parcels



Esri Community Maps Contributors, © OpenStreetMap, Microsoft, Esri, TomTom, Garmin, SafeGraph, GeoTechnologies, Inc, METI/NASA, USGS, EPA, NPS, US Census Bureau, USDA, USFWS



Web AppBuilder for ArcGIS  
Esri, TomTom, Garmin, FAO, NOAA, USGS, EPA, NPS, USFWS | Nearmap |

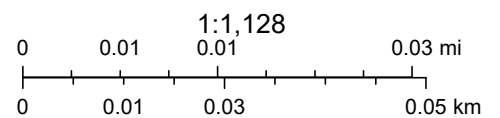


# Aerial Map - 1888 Keswick Ln



6/6/2024, 4:07:40 PM

-  Chamblee City Limits
-  DeKalb County Tax Parcels



Nearmap, Esri Community Maps Contributors, © OpenStreetMap, Microsoft, Esri, TomTom, Garmin, SafeGraph, GeoTechnologies, Inc, METI/NASA, USGS, EPA, NPS, US Census Bureau, USDA, USFWS

Web AppBuilder for ArcGIS  
Esri, TomTom, Garmin, FAO, NOAA, USGS, EPA, NPS, USFWS | Nearmap |